

HIGHLIGHTS OF PRESCRIBING INFORMATION

These highlights do not include all the information needed to use Cymbalta safely and effectively. See full prescribing information for Cymbalta.

Cymbalta (duloxetine hydrochloride) Delayed-Release Capsules for Oral Use.

Initial U.S. Approval: 2004

WARNING: Suicidality and Antidepressants

See full prescribing information for complete boxed warning.

- Increased risk of suicidal thinking and behavior in children, adolescents, and young adults taking antidepressants for major depressive disorder (MDD) and other psychiatric disorders. Cymbalta is not approved for use in pediatric patients (5.1).

RECENT MAJOR CHANGES

Indications and Usage, Major Depressive Disorder (1.1)	11/2007
Indications and Usage, Fibromyalgia (1.4)	06/2008
Dosage and Administration, Fibromyalgia (2.1)	06/2008
Dosage and Administration, Maintenance/Continuation/Extended Treatment (2.2)	06/2008
Warnings and Precautions, Hepatotoxicity (5.2)	06/2008
Warnings and Precautions, Abnormal Bleeding (5.5), Hyponatremia (5.11), Urinary Retention and Hesitation (5.13)	11/2007
Warnings and Precautions, Discontinuation of Treatment with Cymbalta (5.6)	10/2007

INDICATIONS AND USAGE

Cymbalta[®] is a selective serotonin and norepinephrine reuptake inhibitor (SNRI) indicated for:

- Major Depressive Disorder (MDD) (1.1)
- Generalized Anxiety Disorder (GAD) (1.2)
- Diabetic Peripheral Neuropathic Pain (DPNP) (1.3)
- Fibromyalgia (FM) (1.4)

DOSAGE AND ADMINISTRATION

- Cymbalta should generally be administered once daily without regard to meals. Cymbalta should be swallowed whole and should not be chewed or crushed, nor should the capsule be opened and its contents be sprinkled on food or mixed with liquids (2.1).

Indication	Recommended Dose
MDD (2.1, 2.2)	Acute Treatment: 40 mg/day (20 mg twice daily) to 60 mg/day (once daily or as 30 mg twice daily); Maintenance Treatment: 60 mg/day
GAD (2.1)	60 mg/day (once daily)
DPNP (2.1)	60 mg/day (once daily)
FM (2.1)	60 mg/day (once daily)

- Some patients may benefit from starting at 30 mg once daily.
- There is no evidence that doses greater than 60 mg/day confers additional benefit, while some adverse reactions were observed to be dose-dependent.
- Discontinuing Cymbalta: A gradual dose reduction is recommended.

DOSAGE FORMS AND STRENGTHS

- 20, 30 and 60 mg capsules (3)

CONTRAINDICATIONS

- Use of a monoamine oxidase inhibitor concomitantly or in close temporal proximity (4.1)
- Use in patients with uncontrolled narrow-angle glaucoma (4.2).

WARNINGS AND PRECAUTIONS

- Suicidality: Monitor for clinical worsening and suicide risk (5.1).
- Hepatotoxicity: Hepatic failure, sometimes fatal, has been reported in patients treated with Cymbalta. Cymbalta should be discontinued in patients who develop jaundice or other evidence of clinically significant

liver dysfunction and should not be resumed unless another cause can be established. Cymbalta should ordinarily not be prescribed to patients with substantial alcohol use or evidence of chronic liver disease (5.2).

- Orthostatic Hypotension and Syncope: Cases have been reported with duloxetine therapy (5.3).
- Serotonin Syndrome: Serotonin syndrome has been reported with SSRIs and SNRIs (5.4, 7.14).
- Abnormal Bleeding: Cymbalta may increase the risk of bleeding events. Patients should be cautioned about the risk of bleeding associated with the concomitant use of duloxetine and NSAIDs, aspirin, or other drugs that affect coagulation (5.5, 7.4).
- Discontinuation: May result in symptoms, including dizziness, nausea, headache, fatigue, paresthesia, vomiting, irritability, nightmares, insomnia, diarrhea, anxiety, hyperhidrosis, and vertigo (5.6).
- Activation of mania or hypomania has occurred (5.7).
- Seizures: Prescribe with care in patients with a history of seizure disorder (5.8).
- Blood Pressure: Monitor blood pressure prior to initiating treatment and periodically throughout treatment (5.9).
- Inhibitors of CYP1A2 or Thioridazine: Should not administer with Cymbalta (5.10).
- Hyponatremia: Cases of hyponatremia have been reported (5.11).
- Hepatic Insufficiency and Severe Renal Impairment: Should ordinarily not be administered to these patients (5.12).
- Controlled Narrow-Angle Glaucoma: Use cautiously in these patients (5.12).
- Glucose Control in Diabetes: In diabetic peripheral neuropathic pain patients, small increases in fasting blood glucose, HbA_{1c}, and total cholesterol have been observed (5.12).
- Conditions that Slow Gastric Emptying: Use cautiously in these patients (5.12).
- Urinary Hesitation and Retention (5.13).

ADVERSE REACTIONS

- Most common adverse reactions (≥5% and at least twice the incidence of placebo patients): nausea, dry mouth, constipation, somnolence, hyperhidrosis, and decreased appetite (6.3).

To report SUSPECTED ADVERSE REACTIONS, contact Eli Lilly and Company at 1-800-LillyRx or FDA at 1-800-FDA-1088 or www.fda.gov/medwatch.

DRUG INTERACTIONS

- Potent inhibitors of CYP1A2 should be avoided (7.1).
- Potent inhibitors of CYP2D6 may increase duloxetine concentrations (7.2).
- Duloxetine is a moderate inhibitor of CYP2D6 (7.9).

USE IN SPECIFIC POPULATIONS

- Pregnancy and Nursing Mothers: Use only if the potential benefit justifies the potential risk to the fetus or child (2.3, 8.1, 8.3).

See 17 for PATIENT COUNSELING INFORMATION and the FDA approved Medication Guide (17.1).

Revised: 06/2008

FULL PRESCRIBING INFORMATION: CONTENTS*

1 INDICATIONS AND USAGE

- 1.1 Major Depressive Disorder
- 1.2 Generalized Anxiety Disorder
- 1.3 Diabetic Peripheral Neuropathic Pain
- 1.4 Fibromyalgia

2 DOSAGE AND ADMINISTRATION

- 2.1 Initial Treatment
- 2.2 Maintenance/Continuation/Extended Treatment
- 2.3 Dosing in Special Populations
- 2.4 Discontinuing Cymbalta
- 2.5 Switching Patients to or from a Monoamine Oxidase Inhibitor

3 DOSAGE FORMS AND STRENGTHS

4 CONTRAINDICATIONS

- 4.1 Monoamine Oxidase Inhibitors
- 4.2 Uncontrolled Narrow-Angle Glaucoma

5 WARNINGS AND PRECAUTIONS

- 5.1 Clinical Worsening and Suicide Risk
- 5.2 Hepatotoxicity
- 5.3 Orthostatic Hypotension and Syncope
- 5.4 Serotonin Syndrome
- 5.5 Abnormal Bleeding
- 5.6 Discontinuation of Treatment with Cymbalta
- 5.7 Activation of Mania/Hypomania
- 5.8 Seizures
- 5.9 Effect on Blood Pressure
- 5.10 Clinically Important Drug Interactions
- 5.11 Hyponatremia
- 5.12 Use in Patients with Concomitant Illness
- 5.13 Urinary Hesitation and Retention
- 5.14 Laboratory Tests

6 ADVERSE REACTIONS

- 6.1 Clinical Trial Data Sources
- 6.2 Adverse Reactions Reported as Reasons for Discontinuation of Treatment in Placebo-Controlled Trials
- 6.3 Adverse Reactions Occurring at an Incidence of 5% or More and at least Twice Placebo Among Duloxetine-Treated Patients in Placebo-Controlled Trials
- 6.4 Adverse Reactions Occurring at an Incidence of 5% or More Among Duloxetine-Treated Patients in Placebo-Controlled Trials
- 6.5 Adverse Reactions Occurring at an Incidence of 2% or More Among Duloxetine-Treated Patients in Placebo-Controlled Trials
- 6.6 Effects on Male and Female Sexual Function
- 6.7 Vital Sign Changes
- 6.8 Weight Changes
- 6.9 Laboratory Changes
- 6.10 Electrocardiogram Changes
- 6.11 Other Adverse Reactions Observed during the Premarketing and Postmarketing Clinical Trial Evaluation of Duloxetine
- 6.12 Postmarketing Spontaneous Reports

7 DRUG INTERACTIONS

- 7.1 Inhibitors of CYP1A2
- 7.2 Inhibitors of CYP2D6
- 7.3 Dual Inhibition of CYP1A2 and CYP2D6
- 7.4 Drugs that Interfere with Hemostasis (e.g., NSAIDs, Aspirin, and Warfarin)
- 7.5 Lorazepam
- 7.6 Temazepam
- 7.7 Drugs that Affect Gastric Acidity
- 7.8 Drugs Metabolized by CYP1A2
- 7.9 Drugs Metabolized by CYP2D6
- 7.10 Drugs Metabolized by CYP2C9
- 7.11 Drugs Metabolized by CYP3A

- 7.12 Drugs Metabolized by CYP2C19
- 7.13 Monoamine Oxidase Inhibitors
- 7.14 Serotonergic Drugs
- 7.15 Triptans
- 7.16 Alcohol
- 7.17 CNS Drugs
- 7.18 Drugs Highly Bound to Plasma Protein

8 USE IN SPECIFIC POPULATIONS

- 8.1 Pregnancy
- 8.2 Labor and Delivery
- 8.3 Nursing Mothers
- 8.4 Pediatric Use
- 8.5 Geriatric Use
- 8.6 Gender
- 8.7 Smoking Status
- 8.8 Race
- 8.9 Hepatic Insufficiency
- 8.10 Severe Renal Impairment

9 DRUG ABUSE AND DEPENDENCE

- 9.2 Abuse
- 9.3 Dependence

10 OVERDOSAGE

- 10.1 Signs and Symptoms
- 10.2 Management of Overdose

11 DESCRIPTION

12 CLINICAL PHARMACOLOGY

- 12.1 Mechanism of Action
- 12.2 Pharmacodynamics
- 12.3 Pharmacokinetics

13 NONCLINICAL TOXICOLOGY

- 13.1 Carcinogenesis, Mutagenesis, and Impairment of Fertility

14 CLINICAL STUDIES

- 14.1 Major Depressive Disorder
- 14.2 Generalized Anxiety Disorder
- 14.3 Diabetic Peripheral Neuropathic Pain
- 14.4 Fibromyalgia

16 HOW SUPPLIED/STORAGE AND HANDLING

- 16.1 How Supplied
- 16.2 Storage

17 PATIENT COUNSELING INFORMATION

- 17.1 Information on Medication Guide
- 17.2 Clinical Worsening and Suicide Risk
- 17.3 Medication Administration
- 17.4 Continuing the Therapy Prescribed
- 17.5 Abnormal Bleeding
- 17.6 Concomitant Medications
- 17.7 Serotonin Syndrome
- 17.8 Pregnancy and Breast Feeding
- 17.9 Alcohol
- 17.10 Orthostatic Hypotension and Syncope
- 17.11 Interference with Psychomotor Performance

* Sections or subsections omitted from the full prescribing information are not listed.

FULL PRESCRIBING INFORMATION

WARNING: SUICIDALITY AND ANTIDEPRESSANT DRUGS

Antidepressants increased the risk compared to placebo of suicidal thinking and behavior (suicidality) in children, adolescents, and young adults in short-term studies of major depressive disorder (MDD) and other psychiatric disorders. Anyone considering the use of Cymbalta or any other antidepressant in a child, adolescent, or young adult must balance this risk with the clinical need. Short-term studies did not show an increase in the risk of suicidality with antidepressants compared to placebo in adults beyond age 24; there was a reduction in risk with antidepressants compared to placebo in adults aged 65 and older. Depression and certain other psychiatric disorders are themselves associated with increases in the risk of suicide. Patients of all ages who are started on antidepressant therapy should be monitored appropriately and observed closely for clinical worsening, suicidality, or unusual changes in behavior. Families and caregivers should be advised of the need for close observation and communication with the prescriber. Cymbalta is not approved for use in pediatric patients. [see Warnings and Precautions (5.1), Use in Specific Populations (8.4), and Information for Patients (17.2).]

1 INDICATIONS AND USAGE

1.1 Major Depressive Disorder

Cymbalta is indicated for the acute and maintenance treatment of major depressive disorder (MDD) [see Clinical Studies (14.1)].

A major depressive episode (DSM-IV) implies a prominent and relatively persistent (nearly every day for at least 2 weeks) depressed or dysphoric mood that usually interferes with daily functioning, and includes at least 5 of the following 9 symptoms: depressed mood, loss of interest in usual activities, significant change in weight and/or appetite, insomnia or hypersomnia, psychomotor agitation or retardation, increased fatigue, feelings of guilt or worthlessness, slowed thinking or impaired concentration, or a suicide attempt or suicidal ideation.

1.2 Generalized Anxiety Disorder

Cymbalta is indicated for the acute treatment of generalized anxiety disorder (GAD) [see Clinical Studies (14.2)].

Generalized anxiety disorder is defined by the DSM-IV as excessive anxiety and worry, present more days than not, for at least 6 months. The excessive anxiety and worry must be difficult to control and must cause significant distress or impairment in normal functioning. It must be associated with at least 3 of the following 6 symptoms: restlessness or feeling keyed up or on edge, being easily fatigued, difficulty concentrating or mind going blank, irritability, muscle tension, and/or sleep disturbance.

1.3 Diabetic Peripheral Neuropathic Pain

Cymbalta is indicated for the management of neuropathic pain (DPNP) associated with diabetic peripheral neuropathy [see Clinical Studies (14.3)].

1.4 Fibromyalgia

Cymbalta is indicated for the management of fibromyalgia (FM) [see Clinical Studies (14.4)].

2 DOSAGE AND ADMINISTRATION

Cymbalta should be swallowed whole and should not be chewed or crushed, nor should the capsule be opened and its contents sprinkled on food or mixed with liquids. All of these might affect the enteric coating. Cymbalta should be given without regard to meals.

2.1 Initial Treatment

Major Depressive Disorder — Cymbalta should be administered at a total dose of 40 mg/day (given as 20 mg twice daily) to 60 mg/day (given either once daily or as 30 mg twice daily). For some patients, it may be desirable to start at 30 mg once daily for 1 week, to allow patients to adjust to the medication before increasing to 60 mg once daily. While a 120 mg/day dose was shown to be effective, there is no evidence that doses greater than 60 mg/day confer any additional benefits. The safety of doses above 120 mg/day has not been adequately evaluated [see Clinical Studies (14.1)].

Generalized Anxiety Disorder — For most patients, the recommended starting dose for Cymbalta is 60 mg administered once daily. For some patients, it may be desirable to start at 30 mg once daily for 1 week, to allow patients to adjust to the medication before increasing to 60 mg once daily. While a 120 mg once daily dose was shown to be effective, there is no evidence that doses greater than 60 mg/day confer additional benefit. Nevertheless, if a decision is made to increase the dose beyond 60 mg once daily, dose increases should be in increments of 30 mg once daily. The safety of doses above 120 mg once daily has not been adequately evaluated [see *Clinical Studies (14.2)*].

Diabetic Peripheral Neuropathic Pain — The recommended dose for Cymbalta is 60 mg administered once daily. There is no evidence that doses higher than 60 mg confer additional significant benefit and the higher dose is clearly less well tolerated [see *Clinical Studies (14.3)*]. For patients for whom tolerability is a concern, a lower starting dose may be considered.

Since diabetes is frequently complicated by renal disease, a lower starting dose and gradual increase in dose should be considered for patients with renal impairment [see *Clinical Pharmacology (12.3) and Dosing in Special Populations (2.3)*].

Fibromyalgia — The recommended dose for Cymbalta is 60 mg administered once daily. Treatment should begin at 30 mg once daily for 1 week, to allow patients to adjust to the medication before increasing to 60 mg once daily. Some patients may respond to the starting dose. There is no evidence that doses greater than 60 mg/day confer additional benefit, even in patients who do not respond to a 60 mg dose, and higher doses are associated with a higher rate of adverse reactions [see *Clinical Studies (14.4)*].

2.2 Maintenance/Continuation/Extended Treatment

Major Depressive Disorder — It is generally agreed that acute episodes of major depression require several months or longer of sustained pharmacologic therapy. Cymbalta should be administered at a total dose of 60 mg once daily. Patients should be periodically reassessed to determine the need for maintenance treatment and the appropriate dose for such treatment [see *Clinical Studies (14.1)*].

Generalized Anxiety Disorder — Generalized anxiety disorder is recognized as a chronic condition. The efficacy of Cymbalta in the treatment of GAD, that is, beyond 10 weeks, has not been systematically studied. The physician who elects to use Cymbalta for extended periods should periodically evaluate the long-term usefulness of the drug for the individual patient.

Diabetic Peripheral Neuropathic Pain — As the progression of diabetic peripheral neuropathy is highly variable and management of pain is empirical, the effectiveness of Cymbalta must be assessed individually. Efficacy beyond 12 weeks has not been systematically studied in placebo-controlled trials.

Fibromyalgia — Fibromyalgia is recognized as a chronic condition. The efficacy of Cymbalta in the management of fibromyalgia has been demonstrated in placebo-controlled studies up to 3 months. The efficacy of Cymbalta was not demonstrated in longer studies; however, continued treatment should be based on individual patient response.

2.3 Dosing in Special Populations

Hepatic Insufficiency — It is recommended that Cymbalta should ordinarily not be administered to patients with any hepatic insufficiency [see *Warnings and Precautions (5.12) and Use in Specific Populations (8.9)*].

Severe Renal Impairment — Cymbalta is not recommended for patients with end-stage renal disease or severe renal impairment (estimated creatinine clearance <30 mL/min) [see *Warnings and Precautions (5.12) and Use in Specific Populations (8.10)*].

Elderly Patients — No dose adjustment is recommended for elderly patients on the basis of age. As with any drug, caution should be exercised in treating the elderly. When individualizing the dosage in elderly patients, extra care should be taken when increasing the dose [see *Use in Specific Populations (8.5)*].

Pregnant Women — There are no adequate and well-controlled studies in pregnant women; therefore, Cymbalta should be used during pregnancy only if the potential benefit justifies the potential risk to the fetus [see *Use in Specific Populations (8.1)*].

Nursing Mothers — Because the safety of duloxetine in infants is not known, nursing while on Cymbalta is not recommended [see *Use in Specific Populations (8.3)*].

2.4 Discontinuing Cymbalta

Symptoms associated with discontinuation of Cymbalta and other SSRIs and SNRIs have been reported. A gradual reduction in the dose rather than abrupt cessation is recommended whenever possible [see *Warnings and Precautions (5.6)*].

2.5 Switching Patients to or from a Monoamine Oxidase Inhibitor

At least 14 days should elapse between discontinuation of an MAOI and initiation of therapy with Cymbalta. In addition, at least 5 days should be allowed after stopping Cymbalta before starting an MAOI [see *Contraindications (4.1) and Warnings and Precautions (5.4)*].

3 DOSAGE FORM AND STRENGTHS

Cymbalta is available as delayed release capsules:

20mg opaque green capsules imprinted with “Lilly 3235 20mg”

30mg opaque white and blue capsules imprinted with “Lilly 3240 30mg”

60mg opaque green and blue capsules imprinted with “Lilly 3237 60mg”

4 CONTRAINDICATIONS

4.1 Monoamine Oxidase Inhibitors

Concomitant use in patients taking monoamine oxidase inhibitors (MAOIs) is contraindicated due to the risk of serious, sometimes fatal, drug interactions with serotonergic drugs. These interactions may include hyperthermia, rigidity, myoclonus, autonomic instability with possible rapid fluctuations of vital signs, and mental status changes that include extreme agitation progressing to delirium and coma. These reactions have also been reported in patients who have recently discontinued serotonin reuptake inhibitors and are then started on an MAOI. Some cases presented with features resembling neuroleptic malignant syndrome [see *Dosage and Administration (2.5) and Warnings and Precautions (5.4)*].

4.2 Uncontrolled Narrow-Angle Glaucoma

In clinical trials, Cymbalta use was associated with an increased risk of mydriasis; therefore, its use should be avoided in patients with uncontrolled narrow-angle glaucoma [see *Warnings and Precautions (5.12)*].

5 WARNINGS AND PRECAUTIONS

5.1 Clinical Worsening and Suicide Risk

Patients with major depressive disorder (MDD), both adult and pediatric, may experience worsening of their depression and/or the emergence of suicidal ideation and behavior (suicidality) or unusual changes in behavior, whether or not they are taking antidepressant medications, and this risk may persist until significant remission occurs. Suicide is a known risk of depression and certain other psychiatric disorders, and these disorders themselves are the strongest predictors of suicide. There has been a long-standing concern, however, that antidepressants may have a role in inducing worsening of depression and the emergence of suicidality in certain patients during the early phases of treatment.

Pooled analyses of short-term placebo-controlled trials of antidepressant drugs (SSRIs and others) showed that these drugs increase the risk of suicidal thinking and behavior (suicidality) in children, adolescents, and young adults (ages 18-24) with major depressive disorder (MDD) and other psychiatric disorders. Short-term studies did not show an increase in the risk of suicidality with antidepressants compared to placebo in adults beyond age 24; there was a reduction with antidepressants compared to placebo in adults aged 65 and older.

The pooled analyses of placebo-controlled trials in children and adolescents with MDD, obsessive compulsive disorder (OCD), or other psychiatric disorders included a total of 24 short-term trials of 9 antidepressant drugs in over 4400 patients. The pooled analyses of placebo-controlled trials in adults with MDD or other psychiatric disorders included a total of 295 short-term trials (median duration of 2 months) of 11 antidepressant drugs in over 77,000 patients. There was considerable variation in risk of suicidality among drugs, but a tendency toward an increase in the younger patients for almost all drugs studied. There were differences in absolute risk of suicidality across the different indications, with the highest incidence in MDD. The risk of differences (drug vs placebo), however, were relatively stable within age strata and across indications. These risk differences (drug-placebo difference in the number of cases of suicidality per 1000 patients treated) are provided in Table 1.

Table 1

Age Range	Drug-Placebo Difference in Number of Cases of Suicidality per 1000 Patients Treated
	Increases Compared to Placebo
<18	14 additional cases
18-24	5 additional cases
	Decreases Compared to Placebo
25-64	1 fewer case
≥65	6 fewer cases

No suicides occurred in any of the pediatric trials. There were suicides in the adult trials, but the number was not sufficient to reach any conclusion about drug effect on suicide.

It is unknown whether the suicidality risk extends to longer-term use, i.e., beyond several months. However, there is substantial evidence from placebo-controlled maintenance trials in adults with depression that the use of antidepressants can delay the recurrence of depression.

All patients being treated with antidepressants for any indication should be monitored appropriately and observed closely for clinical worsening, suicidality, and unusual changes in behavior, especially during the initial few months of a course of drug therapy, or at times of dose changes, either increases or decreases.

The following symptoms, anxiety, agitation, panic attacks, insomnia, irritability, hostility, aggressiveness, impulsivity, akathisia (psychomotor restlessness), hypomania, and mania, have been reported in adult and pediatric patients being treated with antidepressants for major depressive disorder as well as for other indications, both psychiatric and nonpsychiatric. Although a causal link between the emergence of such symptoms and either the worsening of depression and/or the emergence of suicidal impulses has not been established, there is concern that such symptoms may represent precursors to emerging suicidality.

Consideration should be given to changing the therapeutic regimen, including possibly discontinuing the medication, in patients whose depression is persistently worse, or who are experiencing emergent suicidality or symptoms that might be precursors to worsening depression or suicidality, especially if these symptoms are severe, abrupt in onset, or were not part of the patient's presenting symptoms.

If the decision has been made to discontinue treatment, medication should be tapered, as rapidly as is feasible, but with recognition that discontinuation can be associated with certain symptoms [*see Dosage and Administration (2.4) and Warnings and Precautions (5.6) for descriptions of the risks of discontinuation of Cymbalta*].

Families and caregivers of patients being treated with antidepressants for major depressive disorder or other indications, both psychiatric and nonpsychiatric, should be alerted about the need to monitor patients for the emergence of agitation, irritability, unusual changes in behavior, and the other symptoms described above, as well as the emergence of suicidality, and to report such symptoms immediately to health care providers. Such monitoring should include daily observation by families and caregivers. Prescriptions for Cymbalta should be written for the smallest quantity of capsules consistent with good patient management, in order to reduce the risk of overdose.

Screening Patients for Bipolar Disorder — A major depressive episode may be the initial presentation of bipolar disorder. It is generally believed (though not established in controlled trials) that treating such an episode with an antidepressant alone may increase the likelihood of precipitation of a mixed/manic episode in patients at risk for bipolar disorder. Whether any of the symptoms described above represent such a conversion is unknown. However, prior to initiating treatment with an antidepressant, patients with depressive symptoms should be adequately screened to determine if they are at risk for bipolar disorder; such screening should include a detailed psychiatric history, including a family history of suicide, bipolar disorder, and depression. It should be noted that Cymbalta (duloxetine) is not approved for use in treating bipolar depression.

5.2 Hepatotoxicity

There have been reports of hepatic failure, sometimes fatal, in patients treated with Cymbalta. These cases have presented as hepatitis with abdominal pain, hepatomegaly and elevation of transaminase levels to more than twenty times the upper limit of normal with or without jaundice, reflecting a mixed or hepatocellular pattern of liver injury. Cymbalta should be discontinued in patients who develop jaundice or other evidence of clinically significant liver dysfunction and should not be resumed unless another cause can be established.

Cases of cholestatic jaundice with minimal elevation of transaminase levels have also been reported. Other postmarketing reports indicate that elevated transaminases, bilirubin and alkaline phosphatase have occurred in patients with chronic liver disease or cirrhosis.

Cymbalta increased the risk of elevation of serum transaminases levels in development program clinical trials. Liver transaminase elevations resulted in the discontinuation of 0.3% (82/27,229) of Cymbalta-treated patients. In these patients, the median time to detection of the transaminase elevation was about two months. In placebo-controlled trials in any indication, elevation of ALT >3 times the upper limit of normal occurred in 1.1% (85/7,632) of Cymbalta-treated patients compared to 0.2% (13/5,578) of placebo-treated patients. In placebo-controlled studies using a fixed dose design, there was evidence of a dose response relationship for ALT and AST elevation of >3 times the upper limit of normal and >5 times the upper limit of normal, respectively.

Because it is possible that duloxetine and alcohol may interact to cause liver injury or that duloxetine may aggravate pre-existing liver disease, Cymbalta should ordinarily not be prescribed to patients with substantial alcohol use or evidence of chronic liver disease.

5.3 Orthostatic Hypotension and Syncope

Orthostatic hypotension and syncope have been reported with therapeutic doses of duloxetine. Syncope and orthostatic hypotension tend to occur within the first week of therapy but can occur at any time during duloxetine treatment, particularly after dose increases. The risk of blood pressure decreases may be greater in patients taking concomitant medications that induce orthostatic hypotension (such as antihypertensives) or are potent CYP1A2 inhibitors [*see Warnings and Precautions (5.10) and Drug Interactions (7.1)*] and in patients taking duloxetine at doses above 60 mg daily. Consideration should be given to discontinuing duloxetine in patients who experience symptomatic orthostatic hypotension and/or syncope during duloxetine therapy.

5.4 Serotonin Syndrome

The development of a potentially life-threatening serotonin syndrome may occur with SNRIs and SSRIs, including Cymbalta treatment, particularly with concomitant use of serotonergic drugs (including triptans) and with drugs which impair metabolism of serotonin (including MAOIs). Serotonin syndrome symptoms may include mental status changes (e.g., agitation, hallucinations, coma), autonomic instability (e.g., tachycardia, labile blood pressure, hyperthermia), neuromuscular aberrations (e.g., hyperreflexia, incoordination) and/or gastrointestinal symptoms (e.g., nausea, vomiting, diarrhea).

The concomitant use of Cymbalta with MAOIs intended to treat depression is contraindicated [*see Contraindications (4.1)*].

If concomitant treatment of Cymbalta with a 5-hydroxytryptamine receptor agonist (triptan) is clinically warranted, careful observation of the patient is advised, particularly during treatment initiation and dose increases [*see Drug Interactions (7.15)*].

The concomitant use of Cymbalta with serotonin precursors (such as tryptophan) is not recommended [*see Drug Interactions (7.14)*].

5.5 Abnormal Bleeding

SSRIs and SNRIs, including duloxetine, may increase the risk of bleeding events. Concomitant use of aspirin, nonsteroidal anti-inflammatory drugs, warfarin, and other anti-coagulants may add to this risk. Case reports and epidemiological studies (case-control and cohort design) have demonstrated an association between use of drugs that interfere with serotonin reuptake and the occurrence of gastrointestinal bleeding. Bleeding events related to SSRIs and SNRIs use have ranged from ecchymoses, hematomas, epistaxis, and petechiae to life-threatening hemorrhages.

Patients should be cautioned about the risk of bleeding associated with the concomitant use of duloxetine and NSAIDs, aspirin, or other drugs that affect coagulation.

5.6 Discontinuation of Treatment with Cymbalta

Discontinuation symptoms have been systematically evaluated in patients taking duloxetine. Following abrupt or tapered discontinuation in placebo-controlled clinical trials, the following symptoms occurred at a rate greater than or equal to 1% and at a significantly higher rate in duloxetine-treated patients compared to those discontinuing from placebo: dizziness, nausea, headache, fatigue, paresthesia, vomiting, irritability, nightmares, insomnia, diarrhea, anxiety, hyperhidrosis and vertigo.

During marketing of other SSRIs and SNRIs (serotonin and norepinephrine reuptake inhibitors), there have been spontaneous reports of adverse events occurring upon discontinuation of these drugs, particularly when abrupt, including the following: dysphoric mood, irritability, agitation, dizziness, sensory disturbances (e.g., paresthesias such as electric shock sensations), anxiety, confusion, headache, lethargy, emotional lability, insomnia, hypomania, tinnitus, and seizures. Although these events are generally self-limiting, some have been reported to be severe.

Patients should be monitored for these symptoms when discontinuing treatment with Cymbalta. A gradual reduction in the dose rather than abrupt cessation is recommended whenever possible. If intolerable symptoms occur following a decrease in the dose or upon discontinuation of treatment, then resuming the previously prescribed dose may be considered. Subsequently, the physician may continue decreasing the dose but at a more gradual rate [*see Dosage and Administration (2.4)*].

5.7 Activation of Mania/Hypomania

In placebo-controlled trials in patients with major depressive disorder, activation of mania or hypomania was reported in 0.1% (2/2489) of duloxetine-treated patients and 0.1% (1/1625) of placebo-treated patients. No activation of mania or hypomania was reported in DPNP, GAD, or fibromyalgia placebo-controlled trials. Activation of mania or hypomania has been reported in a small proportion of patients with mood disorders who were treated with other marketed drugs effective in the treatment of major depressive disorder. As with these other agents, Cymbalta should be used cautiously in patients with a history of mania.

5.8 Seizures

Duloxetine has not been systematically evaluated in patients with a seizure disorder, and such patients were excluded from clinical studies. In placebo-controlled clinical trials, seizures/convulsions occurred in 0.03% (3/9445) of patients treated with duloxetine and 0.01% (1/6770) of patients treated with placebo. Cymbalta should be prescribed with care in patients with a history of a seizure disorder.

5.9 Effect on Blood Pressure

In clinical trials across indications, relative to placebo, duloxetine treatment was associated with mean increases of up to 2.1 mm Hg in systolic blood pressure and up to 2.3 mm Hg in diastolic blood pressure. There was no significant difference in the frequency of sustained (3 consecutive visits) elevated blood pressure. In a clinical pharmacology study designed to evaluate the effects of duloxetine on various parameters, including blood pressure at suprathreshold doses with an accelerated dose titration, there was evidence of increases in supine blood pressure at doses up to 200 mg twice daily. At the highest 200 mg twice daily dose, the increase in mean pulse rate was 5.0 to 6.8 beats and increases in mean blood pressure were 4.7 to 6.8 mm Hg (systolic) and 4.5 to 7 mm Hg (diastolic) up to 12 hours after dosing.

Blood pressure should be measured prior to initiating treatment and periodically measured throughout treatment [*see Adverse Reactions (6.7)*].

5.10 Clinically Important Drug Interactions

Both CYP1A2 and CYP2D6 are responsible for duloxetine metabolism.

Potential for Other Drugs to Affect Cymbalta

CYP1A2 Inhibitors — Co-administration of Cymbalta with potent CYP1A2 inhibitors should be avoided [*see Drug Interactions (7.1)*].

CYP2D6 Inhibitors — Because CYP2D6 is involved in duloxetine metabolism, concomitant use of duloxetine with potent inhibitors of CYP2D6 would be expected to, and does, result in higher concentrations (on average of 60%) of duloxetine [*see Drug Interactions (7.2)*].

Potential for Cymbalta to Affect Other Drugs

Drugs Metabolized by CYP2D6 — Co-administration of Cymbalta with drugs that are extensively metabolized by CYP2D6 and that have a narrow therapeutic index, including certain antidepressants (tricyclic antidepressants [TCAs], such as nortriptyline, amitriptyline, and imipramine), phenothiazines and Type 1C antiarrhythmics (e.g., propafenone, flecainide), should be approached with caution. Plasma TCA concentrations may need to be monitored and the dose of the TCA may need to be reduced if a TCA is

co-administered with Cymbalta. Because of the risk of serious ventricular arrhythmias and sudden death potentially associated with elevated plasma levels of thioridazine, Cymbalta and thioridazine should not be co-administered [see *Drug Interactions* (7.9)].

Other Clinically Important Drug Interactions

Alcohol — Use of Cymbalta concomitantly with heavy alcohol intake may be associated with severe liver injury. For this reason, Cymbalta should ordinarily not be prescribed for patients with substantial alcohol use [see *Warnings and Precautions* (5.2) and *Drug Interactions* (7.16)].

CNS Acting Drugs — Given the primary CNS effects of Cymbalta, it should be used with caution when it is taken in combination with or substituted for other centrally acting drugs, including those with a similar mechanism of action [see *Warnings and Precautions* (5.10) and *Drug Interactions* (7.17)].

5.11 Hyponatremia

Hyponatremia may occur as a result of treatment with SSRIs and SNRIs, including Cymbalta. In many cases, this hyponatremia appears to be the result of the syndrome of inappropriate antidiuretic hormone secretion (SIADH). Cases with serum sodium lower than 110 mmol/L have been reported and appeared to be reversible when Cymbalta was discontinued. Elderly patients may be at greater risk of developing hyponatremia with SSRIs and SNRIs. Also, patients taking diuretics or who are otherwise volume depleted may be at greater risk [see *Use in Specific Populations* (8.5)]. Discontinuation of Cymbalta should be considered in patients with symptomatic hyponatremia and appropriate medical intervention should be instituted.

Signs and symptoms of hyponatremia include headache, difficulty concentrating, memory impairment, confusion, weakness, and unsteadiness, which may lead to falls. More severe and/or acute cases have been associated with hallucination, syncope, seizure, coma, respiratory arrest, and death.

5.12 Use in Patients with Concomitant Illness

Clinical experience with Cymbalta in patients with concomitant systemic illnesses is limited. There is no information on the effect that alterations in gastric motility may have on the stability of Cymbalta's enteric coating. In extremely acidic conditions, Cymbalta, unprotected by the enteric coating, may undergo hydrolysis to form naphthol. Caution is advised in using Cymbalta in patients with conditions that may slow gastric emptying (e.g., some diabetics).

Cymbalta has not been systematically evaluated in patients with a recent history of myocardial infarction or unstable coronary artery disease. Patients with these diagnoses were generally excluded from clinical studies during the product's premarketing testing.

Hepatic Insufficiency — Cymbalta should ordinarily not be used in patients with hepatic insufficiency [see *Dosage and Administration* (2.3), *Warnings and Precautions* (5.2), and *Use in Specific Populations* (8.9)].

Severe Renal Impairment — Cymbalta should ordinarily not be used in patients with end-stage renal disease or severe renal impairment (creatinine clearance <30 mL/min). Increased plasma concentration of duloxetine, and especially of its metabolites, occur in patients with end-stage renal disease (requiring dialysis) [see *Dosage and Administration* (2.3) and *Use in Specific Populations* (8.10)].

Controlled Narrow-Angle Glaucoma — In clinical trials, Cymbalta was associated with an increased risk of mydriasis; therefore, it should be used cautiously in patients with controlled narrow-angle glaucoma [see *Contraindications* (4.2)].

Glycemic Control in Patients with Diabetes — As observed in DPNP trials, Cymbalta treatment worsens glycemic control in some patients with diabetes. In three clinical trials of Cymbalta for the management of neuropathic pain associated with diabetic peripheral neuropathy, the mean duration of diabetes was approximately 12 years, the mean baseline fasting blood glucose was 176 mg/dL, and the mean baseline hemoglobin A_{1c} (HbA_{1c}) was 7.8%. In the 12-week acute treatment phase of these studies, Cymbalta was associated with a small increase in mean fasting blood glucose as compared to placebo. In the extension phase of these studies, which lasted up to 52 weeks, mean fasting blood glucose increased by 12 mg/dL in the Cymbalta group and decreased by 11.5 mg/dL in the routine care group. HbA_{1c} increased by 0.5% in the Cymbalta and by 0.2% in the routine care groups.

5.13 Urinary Hesitation and Retention

Cymbalta is in a class of drugs known to affect urethral resistance. If symptoms of urinary hesitation develop during treatment with Cymbalta, consideration should be given to the possibility that they might be drug-related.

In post marketing experience, cases of urinary retention have been observed. In some instances of urinary retention associated with duloxetine use, hospitalization and/or catheterization has been needed.

5.14 Laboratory Tests

No specific laboratory tests are recommended.

6 ADVERSE REACTIONS

6.1 Clinical Trial Data Sources

The data described below reflect exposure to duloxetine in placebo-controlled trials for MDD (N=2327), GAD (N=668), DPNP (N=568) and FM (N=876). The population studied was 17 to 89 years of age; 64.8%, 64.7%, 38.7%, and 94.6% female; and 85.5%, 84.6%, 77.6% and 88% Caucasian for MDD, GAD, DPNP, and FM, respectively. Most patients received doses of a total of 60 to 120 mg per day [see *Clinical Studies (14)*].

The stated frequencies of adverse reactions represent the proportion of individuals who experienced, at least once, a treatment-emergent adverse reaction of the type listed. A reaction was considered treatment-emergent if it occurred for the first time or worsened while receiving therapy following baseline evaluation. Reactions reported during the studies were not necessarily caused by the therapy, and the frequencies do not reflect investigator impression (assessment) of causality.

Because clinical trials are conducted under widely varying conditions, adverse reaction rates observed in the clinical trials of a drug cannot be directly compared to rates in the clinical trials of another drug and may not reflect the rates observed in practice.

6.2 Adverse Reactions Reported as Reasons for Discontinuation of Treatment in Placebo-Controlled Trials

Major Depressive Disorder — Approximately 9% (209/2327) of the patients who received duloxetine in placebo-controlled trials for MDD discontinued treatment due to an adverse reaction, compared with 4.7% (68/1460) of the patients receiving placebo. Nausea (duloxetine 1.3%, placebo 0.5%) was the only common adverse reaction reported as a reason for discontinuation and considered to be drug-related (i.e., discontinuation occurring in at least 1% of the duloxetine-treated patients and at a rate of at least twice that of placebo).

Generalized Anxiety Disorder — Approximately 15.3% (102/668) of the patients who received duloxetine in placebo-controlled trials for GAD discontinued treatment due to an adverse reaction, compared with 4.0% (20/495) for placebo. Common adverse reactions reported as a reason for discontinuation and considered to be drug-related (as defined above) included nausea (duloxetine 3.7%, placebo 0.2%), vomiting (duloxetine 1.3%, placebo 0.0%), and dizziness (duloxetine 1.0%, placebo 0.2%).

Diabetic Peripheral Neuropathic Pain — Approximately 14.3% (81/568) of the patients who received duloxetine in placebo-controlled trials for DPNP discontinued treatment due to an adverse reaction, compared with 7.2% (16/223) for placebo. Common adverse reactions reported as a reason for discontinuation and considered to be drug-related (as defined above) were nausea (duloxetine 3.5%, placebo 0.4%), dizziness (duloxetine 1.6%, placebo 0.4%), somnolence (duloxetine 1.6%, placebo 0.0%), and fatigue (duloxetine 1.1%, placebo 0.0%).

Fibromyalgia — Approximately 19.5% (171/876) of the patients who received duloxetine in 3 to 6 month placebo-controlled trials for FM discontinued treatment due to an adverse reaction, compared with 11.8% (63/535) for placebo. Common adverse reactions reported as a reason for discontinuation and considered to be drug-related (as defined above) included nausea (duloxetine 1.9%, placebo 0.7%), somnolence (duloxetine 1.5%, placebo 0.0%), and fatigue (duloxetine 1.3%, placebo 0.2%).

6.3 Adverse Reactions Occurring at an Incidence of 5% or More and at least Twice Placebo Among Duloxetine or-Treated Patients in Placebo-Controlled Trials

Pooled Trials for all Approved Indications — The most commonly observed adverse reactions in Cymbalta-treated patients (incidence of at least 5% and at least twice the incidence in placebo patients) were nausea, dry mouth, constipation, somnolence, hyperhidrosis and decreased appetite.

In addition to the adverse reactions listed above, DPNP trials also included dizziness and asthenia.

6.4 Adverse Reactions Occurring at an Incidence of 5% or More Among Duloxetine-Treated Patients in Placebo-Controlled Trials

Table 2 gives the incidence of treatment-emergent adverse reactions in placebo-controlled trials for approved indications that occurred in 5% or more of patients treated with duloxetine and with an incidence greater than placebo.

Table 2: Treatment-Emergent Adverse Reactions: Incidence of 5% or More in Placebo-Controlled Trials of Approved Indications

Adverse Reaction	Percentage of Patients Reporting Reaction	
	Cymbalta (N=4843)	Placebo (N=3048)
Nausea	25	9
Headache	16	15
Dry mouth	14	6
Fatigue ^a	11	6
Insomnia ^{*b}	11	7
Dizziness	11	6
Somnolence ^{*c}	11	3
Constipation [*]	11	4
Diarrhea	10	7
Decreased appetite ^{*d}	8	2
Hyperhidrosis	7	2

* Events for which there was a significant dose-dependent relationship in fixed-dose studies, excluding three MDD studies which did not have a placebo lead-in period or dose titration.

^a Also includes asthenia

^b Also includes middle insomnia, early morning awakening, and initial insomnia

^c Also includes hypersomnia and sedation

^d Also includes anorexia

6.5 Adverse Reactions Occurring at an Incidence of 2% or More Among Duloxetine-Treated Patients in Placebo-Controlled Trials

Pooled MDD and GAD Trials — Table 3 gives the incidence of treatment-emergent adverse reactions in MDD and GAD placebo-controlled trials for approved indications that occurred in 2% or more of patients treated with duloxetine and with an incidence greater than placebo.

Table 3: Treatment-Emergent Adverse Reactions: Incidence of 2% or More in MDD and GAD Placebo-Controlled Trials

System Organ Class / Adverse Reaction	Percentage of Patients Reporting Reaction	
	Cymbalta (N=2995)	Placebo (N=1955)
Cardiac Disorders		
Palpitations	2	2
Eye Disorders		
Vision blurred	3	2
Gastrointestinal Disorders		
Nausea	25	9
Dry mouth	15	6
Diarrhea	10	7
Constipation [*]	10	4
Abdominal pain ^a	4	4
Vomiting	5	2
General Disorders and Administration Site Conditions		
Fatigue ^b	10	6
Investigations		
Weight decreased [*]	2	<1
Metabolism and Nutrition Disorders		
Decreased appetite ^c	7	2

Nervous System Disorders		
Dizziness	10	6
Somnolence ^d	10	4
Tremor	3	<1
Psychiatric Disorders		
Insomnia ^e	10	6
Agitation ^f	5	3
Anxiety	3	2
Libido decreased ^g	4	1
Orgasm abnormal ^h	3	<1
Abnormal dreams ⁱ	2	1
Reproductive System and Breast Disorders		
Erectile dysfunction ^j	5	1
Ejaculation delayed* ^j	3	<1
Ejaculation disorder ^{j,k}	2	<1
Respiratory, Thoracic, and Mediastinal Disorders		
Yawning	2	<1
Skin and Subcutaneous Tissue Disorders		
Hyperhidrosis	6	2
Vascular Disorders		
Hot flush	2	<1

* Events for which there was a significant dose-dependent relationship in fixed-dose studies, excluding three MDD studies which did not have a placebo lead-in period or dose titration.

^a Also includes abdominal pain upper, abdominal pain lower, abdominal tenderness, abdominal discomfort, and gastrointestinal pain

^b Also includes asthenia

^c Also includes anorexia

^d Also includes hypersomnia and sedation

^e Also includes middle insomnia, early morning awakening, and initial insomnia

^f Also includes feeling jittery, nervousness, restlessness, tension, and psychomotor agitation

^g Also includes loss of libido

^h Also includes anorgasmia

ⁱ Also includes nightmare

^j Males patients only

^k Also includes ejaculation failure and ejaculation dysfunction

Diabetic Peripheral Neuropathic Pain — Table 4 gives the incidence of treatment-emergent adverse events that occurred in 2% or more of patients treated with Cymbalta in the premarketing acute phase of DPNP placebo-controlled trials (doses of 20 to 120 mg/day) and with an incidence greater than placebo.

Table 4: Treatment-Emergent Adverse Reactions Incidence of 2% or More in DPNP Placebo-Controlled Trials

System Organ Class / Adverse Reaction	Percentage of Patients Reporting Reaction			
	Cymbalta 20 mg once daily (N=115)	Cymbalta 60 mg once daily (N=228)	Cymbalta 60 mg twice daily (N=225)	Placebo (N=223)
Gastrointestinal Disorders				
Nausea	14	22	30	9
Constipation	5	11	15	3
Diarrhea	13	11	7	6
Dry mouth	5	7	12	4
Vomiting	6	5	5	4
Dyspepsia	4	4	4	3

Loose stools	2	3	2	1
General Disorders and Administration Site Conditions				
Fatigue	2	10	12	5
Asthenia	2	4	8	1
Pyrexia	2	1	3	1
Infections and Infestations				
Nasopharyngitis	9	7	9	5
Metabolism and Nutrition Disorders				
Decreased appetite	3	4	11	<1
Anorexia	3	3	5	<1
Musculoskeletal and Connective Tissue Disorders				
Muscle cramp	5	4	4	3
Myalgia	3	1	4	<1
Nervous System Disorders				
Somnolence	7	15	21	5
Headache	13	13	15	10
Dizziness	6	14	17	6
Tremor	0	1	5	0
Psychiatric Disorders				
Insomnia	9	8	13	7
Renal and Urinary Disorders				
Pollakiuria	3	1	5	2
Reproductive System and Breast Disorders				
Erectile dysfunction ¹	0	1	4	0
Respiratory, Thoracic and Mediastinal Disorders				
Cough	6	3	5	4
Pharyngolaryngeal pain	3	1	6	1
Skin and Subcutaneous Tissue Disorders				
Hyperhidrosis	6	6	8	2

¹ Male patients only.

Fibromyalgia — Table 5 gives the incidence of treatment-emergent adverse events that occurred in 2% or more of patients treated with Cymbalta in the premarketing acute phase of FM placebo-controlled trials and with an incidence greater than placebo.

Table 5: Treatment-Emergent Adverse Reactions: Incidence of 2% or More in Fibromyalgia Placebo-Controlled Trials

System Organ Class / Adverse Reaction	Percentage of Patients Reporting Reaction	
	Cymbalta (N=876)	Placebo (N=535)
Cardiac Disorders		
Palpitations	2	2
Eye Disorders		
Vision blurred	2	1
Gastrointestinal Disorders		
Nausea	29	11
Dry mouth	18	5
Constipation	15	4
Diarrhea	12	8

Dyspepsia	5	3
General Disorders and Administration Site Conditions		
Fatigue ^a	15	8
Immune System Disorders		
Seasonal allergy	3	2
Infections and Infestations		
Upper respiratory tract infection	7	6
Urinary tract infection	3	3
Influenza	2	2
Gastroenteritis viral	2	2
Investigations		
Weight increased	2	1
Metabolism and Nutrition Disorders		
Decreased appetite ^b	11	2
Metabolism and nutrition disorders		
Musculoskeletal pain	5	4
Muscle spasms	4	3
Nervous System Disorders		
Headache	20	12
Dizziness	11	7
Somnolence ^c	11	3
Tremor	4	1
Paraesthesia	4	4
Migraine	3	3
Dysgeusia	3	1
Psychiatric Disorders		
Insomnia ^d	16	10
Agitation ^e	6	2
Sleep disorder	3	2
Abnormal dreams ^f	3	1
Orgasm abnormal ^g	3	<1
Libido decreased ^h	2	<1
Reproductive System and Breast Disorders		
Ejaculation disorder ^{1,i}	4	0
Penis disorder ¹	2	0
Respiratory, Thoracic, and Mediastinal Disorders		
Cough	4	3
Pharyngolaryngeal pain	3	3
Skin and Subcutaneous Tissue Disorders		
Hyperhidrosis	7	1
Rash	4	2
Pruritis	3	2
Vascular Disorders		
Hot flush	3	2

¹ Male patients only (N = 46 duloxetine-treated patients versus 26 placebo patients)

^a Also includes asthenia

^b Also includes anorexia

^c Also includes hypersomnia and sedation

^d Also includes middle insomnia, early morning awakening, and initial insomnia

^e Also includes feeling jittery, nervousness, restlessness, tension, and psychomotor agitation

^f Also includes nightmare

^g Also includes anorgasmia

^h Also includes loss of libido

ⁱ Also includes ejaculation failure and ejaculation dysfunction

6.6 Effects on Male and Female Sexual Function

Changes in sexual desire, sexual performance and sexual satisfaction often occur as manifestations of psychiatric disorders or diabetes, but they may also be a consequence of pharmacologic treatment. Because adverse sexual reactions are presumed to be voluntarily underreported, the Arizona Sexual Experience Scale (ASEX), a validated measure designed to identify sexual side effects, was used prospectively in 4 MDD placebo-controlled trials. In these trials, as shown in Table 6 below, patients treated with Cymbalta experienced significantly more sexual dysfunction, as measured by the total score on the ASEX, than did patients treated with placebo. Gender analysis showed that this difference occurred only in males. Males treated with Cymbalta experienced more difficulty with ability to reach orgasm (ASEX Item 4) than males treated with placebo. Females did not experience more sexual dysfunction on Cymbalta than on placebo as measured by ASEX total score. Negative numbers signify an improvement from a baseline level of dysfunction, which is commonly seen in depressed patients. Physicians should routinely inquire about possible sexual side effects.

Table 6: Mean Change in ASEX Scores by Gender in MDD Placebo-Controlled Trials

	Male Patients ^a		Female Patients ^a	
	Cymbalta (n=175)	Placebo (n=83)	Cymbalta (n=241)	Placebo (n=126)
ASEX Total (Items 1-5)	0.56 ^b	-1.07	-1.15	-1.07
Item 1 — Sex drive	-0.07	-0.12	-0.32	-0.24
Item 2 — Arousal	0.01	-0.26	-0.21	-0.18
Item 3 — Ability to achieve erection (men); Lubrication (women)	0.03	-0.25	-0.17	-0.18
Item 4 — Ease of reaching orgasm	0.40 ^c	-0.24	-0.09	-0.13
Item 5 — Orgasm satisfaction	0.09	-0.13	-0.11	-0.17

^a n=Number of patients with non-missing change score for ASEX total

^b p=0.013 versus placebo

^c p<0.001 versus placebo

6.7 Vital Sign Changes

In clinical trials across indications, relative to placebo, duloxetine treatment was associated with mean increases of up to 2.1 mm Hg in systolic blood pressure and up to 2.3 mm Hg in diastolic blood pressure. There was no significant difference in the frequency of sustained (3 consecutive visits) elevated blood pressure [see *Warnings and Precautions (5.3 and 5.9)*].

Duloxetine treatment, for up to 26-weeks in placebo-controlled trials typically caused a small increase in heart rate compared to placebo of up to 3-4 beats per minute.

6.8 Weight Changes

In placebo-controlled clinical trials, MDD and GAD patients treated with Cymbalta for up to 10-weeks experienced a mean weight loss of approximately 0.5 kg, compared with a mean weight gain of approximately 0.2 kg in placebo-treated patients. In DPN placebo-controlled clinical trials, patients treated with Cymbalta for up to 13-weeks experienced a mean weight loss of approximately 1.1 kg, compared with a mean weight gain of approximately 0.2 kg in placebo-treated patients. In fibromyalgia studies, patients treated with Cymbalta for up to 26-weeks experienced a mean weight loss of approximately 0.4 kg compared with a mean weight gain of approximately 0.3 kg in placebo-treated patients. In one long-term fibromyalgia 60-week uncontrolled study, duloxetine patients had a mean weight increase of 0.7 kg.

6.9 Laboratory Changes

Cymbalta treatment in placebo-controlled clinical trials, was associated with small mean increases from baseline to endpoint in ALT, AST, CPK, and alkaline phosphatase; infrequent, modest, transient, abnormal values were observed for these analytes in Cymbalta-treated patients when compared with placebo-treated patients [see *Warnings and Precautions (5.2)*].

6.10 Electrocardiogram Changes

Electrocardiograms were obtained from duloxetine-treated patients and placebo-treated patients in clinical trials lasting up to 13-weeks. No clinically significant differences were observed for QTc, QT, PR, and QRS intervals between duloxetine-treated and placebo-treated patients. There were no differences in clinically meaningful QTcF elevations between duloxetine and placebo. In a positive-controlled study in healthy volunteers using duloxetine up to 200 mg twice daily, no prolongation of the corrected QT interval was observed.

6.11 Other Adverse Reactions Observed During the Premarketing and Postmarketing Clinical Trial Evaluation of Duloxetine

Following is a list of treatment-emergent adverse reactions reported by patients treated with duloxetine in clinical trials. In clinical trials of all indications, 27,229 patients were treated with duloxetine. Of these, 29% (7886) took duloxetine for at least 6 months, and 13.3% (3614) for at least one year. The following listing is not intended to include reactions (1) already listed in previous tables or elsewhere in labeling, (2) for which a drug cause was remote, (3) which were so general as to be uninformative, (4) which were not considered to have significant clinical implications, or (5) which occurred at a rate equal to or less than placebo.

Reactions are categorized by body system according to the following definitions: frequent adverse reactions are those occurring in at least 1/100 patients; infrequent adverse reactions are those occurring in 1/100 to 1/1000 patients; rare reactions are those occurring in fewer than 1/1000 patients.

Cardiac Disorders — *Frequent*: palpitations; *Infrequent*: myocardial infarction and tachycardia.

Ear and Labyrinth Disorders — *Frequent*: vertigo; *Infrequent*: ear pain and tinnitus.

Endocrine Disorders — *Infrequent*: hypothyroidism.

Eye Disorders — *Frequent*: vision blurred; *Infrequent*: diplopia and visual disturbance.

Gastrointestinal Disorders — *Frequent*: flatulence; *Infrequent*: eructation, gastritis, halitosis, and stomatitis; *Rare*: gastric ulcer, hematochezia, and melena.

General Disorders and Administration Site Conditions — *Frequent*: chills/rigors; *Infrequent*: feeling abnormal, feeling hot and/or cold, malaise, and thirst; *Rare*: gait disturbance.

Infections and Infestations — *Infrequent*: gastroenteritis and laryngitis.

Investigations — *Frequent*: weight increased; *Infrequent*: blood cholesterol increased.

Metabolism and Nutrition Disorders — *Infrequent*: dehydration and hyperlipidemia; *Rare*: dyslipidemia.

Musculoskeletal and Connective Tissue Disorders — *Frequent*: musculoskeletal pain; *Infrequent*: muscle tightness and muscle twitching.

Nervous System Disorders — *Frequent*: dysgeusia, lethargy, and parasthesia/hypoesthesia; *Infrequent*: disturbance in attention, dyskinesia, myoclonus, and poor quality sleep; *Rare*: dysarthria.

Psychiatric Disorders — *Frequent*: abnormal dreams and sleep disorder; *Infrequent*: apathy, bruxism, disorientation/confusional state, irritability, mood swings, and suicide attempt; *Rare*: completed suicide.

Renal and Urinary Disorders — *Infrequent*: dysuria, micturition urgency, nocturia, polyuria, and urine odor abnormal.

Reproductive System and Breast Disorders — *Frequent*: anorgasmia/orgasm abnormal; *Infrequent*: menopausal symptoms, and sexual dysfunction.

Respiratory, Thoracic and Mediastinal Disorders — *Frequent*: yawning; *Infrequent*: throat tightness.

Skin and Subcutaneous Tissue Disorders — *Infrequent*: cold sweat, dermatitis contact, erythema, increased tendency to bruise, night sweats, and photosensitivity reaction; *Rare*: ecchymosis.

Vascular Disorders — *Frequent*: hot flush; *Infrequent*: flushing, orthostatic hypotension, and peripheral coldness.

6.12 Postmarketing Spontaneous Reports

The following adverse reactions have been identified during postapproval use of Cymbalta. Because these reactions are reported voluntarily from a population of uncertain size, it is not always possible to reliably estimate their frequency or establish a causal relationship to drug exposure.

Adverse reactions reported since market introduction that were temporally related to duloxetine therapy and not mentioned elsewhere in labeling include: anaphylactic reaction, aggression and anger (particularly early in treatment or after treatment discontinuation), angioneurotic edema, erythema

multiforme, extrapyramidal disorder, glaucoma, hallucinations, hyperglycemia, hypersensitivity, hypertensive crisis, muscle spasm, rash, supraventricular arrhythmia, tinnitus (upon treatment discontinuation), trismus, and urticaria.

Serious skin reactions including Stevens-Johnson Syndrome that have required drug discontinuation and/or hospitalization have been reported with duloxetine.

7 DRUG INTERACTIONS

Both CYP1A2 and CYP2D6 are responsible for duloxetine metabolism.

7.1 Inhibitors of CYP1A2

When duloxetine 60 mg was co-administered with fluvoxamine 100 mg, a potent CYP1A2 inhibitor, to male subjects (n=14) duloxetine AUC was increased approximately 6-fold, the C_{max} was increased about 2.5-fold, and duloxetine $t_{1/2}$ was increased approximately 3-fold. Other drugs that inhibit CYP1A2 metabolism include cimetidine and quinolone antimicrobials such as ciprofloxacin and enoxacin [see *Warnings and Precautions* (5.10)].

7.2 Inhibitors of CYP2D6

Concomitant use of duloxetine (40 mg once daily) with paroxetine (20 mg once daily) increased the concentration of duloxetine AUC by about 60%, and greater degrees of inhibition are expected with higher doses of paroxetine. Similar effects would be expected with other potent CYP2D6 inhibitors (e.g., fluoxetine, quinidine) [see *Warnings and Precautions* (5.10)].

7.3 Dual Inhibition of CYP1A2 and CYP2D6

Concomitant administration of duloxetine 40 mg twice daily with fluvoxamine 100 mg, a potent CYP1A2 inhibitor, to CYP2D6 poor metabolizer subjects (n=14) resulted in a 6-fold increase in duloxetine AUC and C_{max} .

7.4 Drugs that Interfere with Hemostasis (e.g., NSAIDs, Aspirin, and Warfarin)

Serotonin release by platelets plays an important role in hemostasis. Epidemiological studies of the case-control and cohort design that have demonstrated an association between use of psychotropic drugs that interfere with serotonin reuptake and the occurrence of upper gastrointestinal bleeding have also shown that concurrent use of an NSAID or aspirin may potentiate this risk of bleeding. Altered anticoagulant effects, including increased bleeding, have been reported when SSRIs or SNRIs are coadministered with warfarin. Patients receiving warfarin therapy should be carefully monitored when duloxetine is initiated or discontinued [see *Warnings and Precautions* (5.5)].

7.5 Lorazepam

Under steady-state conditions for duloxetine (60 mg Q 12 hours) and lorazepam (2 mg Q 12 hours), the pharmacokinetics of duloxetine were not affected by co-administration.

7.6 Temazepam

Under steady-state conditions for duloxetine (20 mg qhs) and temazepam (30 mg qhs), the pharmacokinetics of duloxetine were not affected by co-administration.

7.7 Drugs that Affect Gastric Acidity

Cymbalta has an enteric coating that resists dissolution until reaching a segment of the gastrointestinal tract where the pH exceeds 5.5. In extremely acidic conditions, Cymbalta, unprotected by the enteric coating, may undergo hydrolysis to form naphthol. Caution is advised in using Cymbalta in patients with conditions that may slow gastric emptying (e.g., some diabetics). Drugs that raise the gastrointestinal pH may lead to an earlier release of duloxetine. However, co-administration of Cymbalta with aluminum- and magnesium-containing antacids (51 mEq) or Cymbalta with famotidine, had no significant effect on the rate or extent of duloxetine absorption after administration of a 40-mg oral dose. It is unknown whether the concomitant administration of proton pump inhibitors affects duloxetine absorption [see *Warnings and Precautions* (5.12)].

7.8 Drugs Metabolized by CYP1A2

In vitro drug interaction studies demonstrate that duloxetine does not induce CYP1A2 activity. Therefore, an increase in the metabolism of CYP1A2 substrates (e.g., theophylline, caffeine) resulting from induction is not anticipated, although clinical studies of induction have not been performed. Duloxetine is an inhibitor of the CYP1A2 isoform in *in vitro* studies, and in two clinical studies the average (90% confidence interval) increase in theophylline AUC was 7% (1%-15%) and 20% (13%-27%) when co-administered with duloxetine (60 mg twice daily).

7.9 Drugs Metabolized by CYP2D6

Duloxetine is a moderate inhibitor of CYP2D6. When duloxetine was administered (at a dose of 60 mg twice daily) in conjunction with a single 50-mg dose of desipramine, a CYP2D6 substrate, the AUC of desipramine increased 3-fold [see *Warnings and Precautions* (5.10)].

7.10 Drugs Metabolized by CYP2C9

Duloxetine does not inhibit the *in vitro* enzyme activity of CYP2C9. Inhibition of the metabolism of CYP2C9 substrates is therefore not anticipated, although clinical studies have not been performed.

7.11 Drugs Metabolized by CYP3A

Results of *in vitro* studies demonstrate that duloxetine does not inhibit or induce CYP3A activity. Therefore, an increase or decrease in the metabolism of CYP3A substrates (e.g., oral contraceptives and other steroidal agents) resulting from induction or inhibition is not anticipated, although clinical studies have not been performed.

7.12 Drugs Metabolized by CYP2C19

Results of *in vitro* studies demonstrate that duloxetine does not inhibit CYP2C19 activity at therapeutic concentrations. Inhibition of the metabolism of CYP2C19 substrates is therefore not anticipated, although clinical studies have not been performed.

7.13 Monoamine Oxidase Inhibitors

[see *Dosage and Administration* (2.5), *Contraindications* (4.1), and *Warnings and Precautions* (5.4)].

7.14 Serotonergic Drugs

Based on the mechanism of action of SNRIs and SSRIs, including Cymbalta, and the potential for serotonin syndrome, caution is advised when Cymbalta is co-administered with other drugs that may affect the serotonergic neurotransmitter systems, such as triptans, linezolid (an antibiotic which is a reversible non-selective MAOI), lithium, tramadol, or St. John's Wort. The concomitant use of Cymbalta with other SSRIs, SNRIs or tryptophan is not recommended [see *Warnings and Precautions* (5.4)].

7.15 Triptans

There have been rare postmarketing reports of serotonin syndrome with use of an SSRI and a triptan. If concomitant treatment of Cymbalta with a triptan is clinically warranted, careful observation of the patient is advised, particularly during treatment initiation and dose increases [see *Warnings and Precautions* (5.4)].

7.16 Alcohol

When Cymbalta and ethanol were administered several hours apart so that peak concentrations of each would coincide, Cymbalta did not increase the impairment of mental and motor skills caused by alcohol.

In the Cymbalta clinical trials database, three Cymbalta-treated patients had liver injury as manifested by ALT and total bilirubin elevations, with evidence of obstruction. Substantial intercurrent ethanol use was present in each of these cases, and this may have contributed to the abnormalities seen [see *Warnings and Precautions* (5.2 and 5.10)].

7.17 CNS Drugs

[see *Warnings and Precautions* (5.10)].

7.18 Drugs Highly Bound to Plasma Protein

Because duloxetine is highly bound to plasma protein, administration of Cymbalta to a patient taking another drug that is highly protein bound may cause increased free concentrations of the other drug, potentially resulting in adverse reactions.

8 USE IN SPECIFIC POPULATIONS

8.1 Pregnancy

Teratogenic Effects, Pregnancy Category C — In animal reproduction studies, duloxetine has been shown to have adverse effects on embryo/fetal and postnatal development.

When duloxetine was administered orally to pregnant rats and rabbits during the period of organogenesis, there was no evidence of teratogenicity at doses up to 45 mg/kg/day (7 times the maximum recommended human dose [MRHD, 60 mg/day] and 4 times the human dose of 120 mg/day on a mg/m² basis, in rat; 15 times the MRHD and 7 times the human dose of 120 mg/day on a mg/m² basis in rabbit). However, fetal weights were decreased at this dose, with a no-effect dose of 10 mg/kg/day (2 times the

MRHD and ≈ 1 times the human dose of 120 mg/day on a mg/m^2 basis in rat; 3 times the MRHD and 2 times the human dose of 120 mg/day on a mg/m^2 basis in rabbits).

When duloxetine was administered orally to pregnant rats throughout gestation and lactation, the survival of pups to 1 day postpartum and pup body weights at birth and during the lactation period were decreased at a dose of 30 mg/kg/day (5 times the MRHD and 2 times the human dose of 120 mg/day on a mg/m^2 basis); the no-effect dose was 10 mg/kg/day. Furthermore, behaviors consistent with increased reactivity, such as increased startle response to noise and decreased habituation of locomotor activity, were observed in pups following maternal exposure to 30 mg/kg/day. Post-weaning growth and reproductive performance of the progeny were not affected adversely by maternal duloxetine treatment.

There are no adequate and well-controlled studies in pregnant women; therefore, duloxetine should be used during pregnancy only if the potential benefit justifies the potential risk to the fetus.

Nonteratogenic Effects — Neonates exposed to SSRIs or serotonin and norepinephrine reuptake inhibitors (SNRIs), late in the third trimester have developed complications requiring prolonged hospitalization, respiratory support, and tube feeding. Such complications can arise immediately upon delivery. Reported clinical findings have included respiratory distress, cyanosis, apnea, seizures, temperature instability, feeding difficulty, vomiting, hypoglycemia, hypotonia, hypertonia, hyperreflexia, tremor, jitteriness, irritability, and constant crying. These features are consistent with either a direct toxic effect of SSRIs and SNRIs or, possibly, a drug discontinuation syndrome. It should be noted that, in some cases, the clinical picture is consistent with serotonin syndrome [*see Warnings and Precautions (5.4)*].

When treating pregnant women with Cymbalta during the third trimester, the physician should carefully consider the potential risks and benefits of treatment. The physician may consider tapering Cymbalta in the third trimester [*see Dosage and Administration (2.3)*].

8.2 Labor and Delivery

The effect of duloxetine on labor and delivery in humans is unknown. Duloxetine should be used during labor and delivery only if the potential benefit justifies the potential risk to the fetus.

8.3 Nursing Mothers

Duloxetine is excreted into the milk of lactating women. The estimated daily infant dose on a mg/kg basis is approximately 0.14% of the maternal dose. Because the safety of duloxetine in infants is not known, nursing while on Cymbalta is not recommended. However, if the physician determines that the benefit of duloxetine therapy for the mother outweighs any potential risk to the infant, no dosage adjustment is required as lactation did not influence duloxetine pharmacokinetics.

The disposition of duloxetine was studied in 6 lactating women who were at least 12 weeks postpartum. Duloxetine 40 mg twice daily was given for 3.5 days. Like many other drugs, duloxetine is detected in breast milk, and steady state concentrations in breast milk are about one-fourth those in plasma. The amount of duloxetine in breast milk is approximately 7 $\mu\text{g}/\text{day}$ while on 40 mg BID dosing. The excretion of duloxetine metabolites into breast milk was not examined. Because the safety of duloxetine in infants is not known, nursing while on Cymbalta is not recommended [*see Dosing and Administration (2.3)*].

8.4 Pediatric Use

Safety and effectiveness in the pediatric population have not been established [*see Boxed Warning and Warnings and Precautions (5.1)*]. Anyone considering the use of Cymbalta in a child or adolescent must balance the potential risks with the clinical need.

8.5 Geriatric Use

Of the 2418 patients in premarketing clinical studies of Cymbalta for MDD, 5.9% (143) were 65 years of age or over. Of the 1074 patients in the DPNP premarketing studies, 33% (357) were 65 years of age or over. Of the 1761 patients in FM premarketing studies, 7.9% (140) were 65 years of age or over. Premarketing clinical studies of GAD did not include sufficient numbers of subjects age 65 or over to determine whether they respond differently from younger subjects. In the MDD, DPNP and FM studies, no overall differences in safety or effectiveness were observed between these subjects and younger subjects, and other reported clinical experience has not identified differences in responses between the elderly and younger patients, but greater sensitivity of some older individuals cannot be ruled out. SSRIs and SNRIs, including Cymbalta have been associated with cases of clinically significant hyponatremia in elderly patients, who may be at greater risk for this adverse event [*see Warnings and Precautions (5.11)*].

The pharmacokinetics of duloxetine after a single dose of 40 mg were compared in healthy elderly females (65 to 77 years) and healthy middle-age females (32 to 50 years). There was no difference in the

C_{max} , but the AUC of duloxetine was somewhat (about 25%) higher and the half-life about 4 hours longer in the elderly females. Population pharmacokinetic analyses suggest that the typical values for clearance decrease by approximately 1% for each year of age between 25 to 75 years of age; but age as a predictive factor only accounts for a small percentage of between-patient variability. Dosage adjustment based on the age of the patient is not necessary [see *Dosage and Administration (2.3)*].

8.6 Gender

Duloxetine's half-life is similar in men and women. Dosage adjustment based on gender is not necessary.

8.7 Smoking Status

Duloxetine bioavailability (AUC) appears to be reduced by about one-third in smokers. Dosage modifications are not recommended for smokers.

8.8 Race

No specific pharmacokinetic study was conducted to investigate the effects of race.

8.9 Hepatic Insufficiency

Patients with clinically evident hepatic insufficiency have decreased duloxetine metabolism and elimination. After a single 20-mg dose of Cymbalta, 6 cirrhotic patients with moderate liver impairment (Child-Pugh Class B) had a mean plasma duloxetine clearance about 15% that of age- and gender-matched healthy subjects, with a 5-fold increase in mean exposure (AUC). Although C_{max} was similar to normals in the cirrhotic patients, the half-life was about 3 times longer [see *Dosage and Administration (2.3)* and *Warnings and Precautions (5.12)*].

8.10 Severe Renal Impairment

Limited data are available on the effects of duloxetine in patients with end-stage renal disease (ESRD). After a single 60-mg dose of duloxetine, C_{max} and AUC values were approximately 100% greater in patients with end-stage renal disease receiving chronic intermittent hemodialysis than in subjects with normal renal function. The elimination half-life, however, was similar in both groups. The AUCs of the major circulating metabolites, 4-hydroxy duloxetine glucuronide and 5-hydroxy, 6-methoxy duloxetine sulfate, largely excreted in urine, were approximately 7- to 9-fold higher and would be expected to increase further with multiple dosing. Population PK analyses suggest that mild to moderate degrees of renal dysfunction (estimated CrCl 30-80 mL/min) have no significant effect on duloxetine apparent clearance [see *Dosage and Administration (2.3)* and *Warnings and Precautions (5.12)*].

9 DRUG ABUSE AND DEPENDENCE

9.2 Abuse

In animal studies, duloxetine did not demonstrate barbiturate-like (depressant) abuse potential.

While Cymbalta has not been systematically studied in humans for its potential for abuse, there was no indication of drug-seeking behavior in the clinical trials. However, it is not possible to predict on the basis of premarketing experience the extent to which a CNS active drug will be misused, diverted, and/or abused once marketed. Consequently, physicians should carefully evaluate patients for a history of drug abuse and follow such patients closely, observing them for signs of misuse or abuse of Cymbalta (e.g., development of tolerance, incrementation of dose, drug-seeking behavior).

9.3 Dependence

In drug dependence studies, duloxetine did not demonstrate dependence-producing potential in rats.

10 OVERDOSAGE

10.1 Signs and Symptoms

In postmarketing experience, fatal outcomes have been reported for acute overdoses, primarily with mixed overdoses, but also with duloxetine only, at doses as low as 1000 mg. Signs and symptoms of overdose (duloxetine alone or with mixed drugs) included somnolence, coma, serotonin syndrome, seizures, syncope, tachycardia, hypotension, hypertension, and vomiting.

10.2 Management of Overdose

There is no specific antidote to Cymbalta, but if serotonin syndrome ensues, specific treatment (such as with cyproheptadine and/or temperature control) may be considered. In case of acute overdose, treatment should consist of those general measures employed in the management of overdose with any drug.

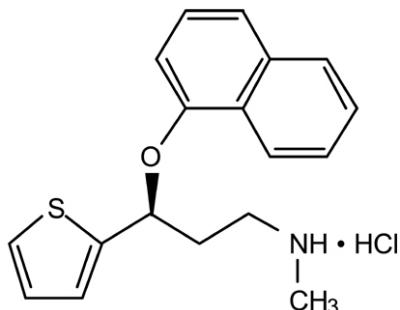
An adequate airway, oxygenation, and ventilation should be assured, and cardiac rhythm and vital signs should be monitored. Induction of emesis is not recommended. Gastric lavage with a large-bore orogastric tube with appropriate airway protection, if needed, may be indicated if performed soon after ingestion or in symptomatic patients.

Activated charcoal may be useful in limiting absorption of duloxetine from the gastrointestinal tract. Administration of activated charcoal has been shown to decrease AUC and C_{max} by an average of one-third, although some subjects had a limited effect of activated charcoal. Due to the large volume of distribution of this drug, forced diuresis, dialysis, hemoperfusion, and exchange transfusion are unlikely to be beneficial.

In managing overdose, the possibility of multiple drug involvement should be considered. A specific caution involves patients who are taking or have recently taken Cymbalta and might ingest excessive quantities of a TCA. In such a case, decreased clearance of the parent tricyclic and/or its active metabolite may increase the possibility of clinically significant sequelae and extend the time needed for close medical observation [see *Warnings and Precautions (5.4) and Drug Interactions (7)*]. The physician should consider contacting a poison control center for additional information on the treatment of any overdose. Telephone numbers for certified poison control centers are listed in the *Physicians' Desk Reference (PDR)*.

11 DESCRIPTION

Cymbalta[®] (duloxetine hydrochloride) is a selective serotonin and norepinephrine reuptake inhibitor (SSNRI) for oral administration. Its chemical designation is (+)-(S)-N-methyl-γ-(1-naphthoxy)-2-thiophenepropylamine hydrochloride. The empirical formula is $C_{18}H_{19}NOS \cdot HCl$, which corresponds to a molecular weight of 333.88. The structural formula is:



Duloxetine hydrochloride is a white to slightly brownish white solid, which is slightly soluble in water.

Each capsule contains enteric-coated pellets of 22.4, 33.7, or 67.3 mg of duloxetine hydrochloride equivalent to 20, 30, or 60 mg of duloxetine, respectively. These enteric-coated pellets are designed to prevent degradation of the drug in the acidic environment of the stomach. Inactive ingredients include FD&C Blue No. 2, gelatin, hypromellose, hydroxypropyl methylcellulose acetate succinate, sodium lauryl sulfate, sucrose, sugar spheres, talc, titanium dioxide, and triethyl citrate. The 20 and 60 mg capsules also contain iron oxide yellow.

12 CLINICAL PHARMACOLOGY

12.1 Mechanism of Action

Although the exact mechanisms of the antidepressant, central pain inhibitory and anxiolytic actions of duloxetine in humans are unknown, these actions are believed to be related to its potentiation of serotonergic and noradrenergic activity in the CNS.

12.2 Pharmacodynamics

Preclinical studies have shown that duloxetine is a potent inhibitor of neuronal serotonin and norepinephrine reuptake and a less potent inhibitor of dopamine reuptake. Duloxetine has no significant affinity for dopaminergic, adrenergic, cholinergic, histaminergic, opioid, glutamate, and GABA receptors *in vitro*. Duloxetine does not inhibit monoamine oxidase (MAO).

Cymbalta is in a class of drugs known to affect urethral resistance. If symptoms of urinary hesitation develop during treatment with Cymbalta, consideration should be given to the possibility that they might be drug-related.

12.3 Pharmacokinetics

Duloxetine has an elimination half-life of about 12 hours (range 8 to 17 hours) and its pharmacokinetics are dose proportional over the therapeutic range. Steady-state plasma concentrations are typically achieved after 3 days of dosing. Elimination of duloxetine is mainly through hepatic metabolism involving two P450 isozymes, CYP1A2 and CYP2D6.

Absorption and Distribution — Orally administered duloxetine hydrochloride is well absorbed. There is a median 2-hour lag until absorption begins (T_{lag}), with maximal plasma concentrations (C_{max}) of duloxetine occurring 6 hours post dose. Food does not affect the C_{max} of duloxetine, but delays the time to reach peak concentration from 6 to 10 hours and it marginally decreases the extent of absorption (AUC) by about 10%. There is a 3-hour delay in absorption and a one-third increase in apparent clearance of duloxetine after an evening dose as compared to a morning dose.

The apparent volume of distribution averages about 1640 L. Duloxetine is highly bound (>90%) to proteins in human plasma, binding primarily to albumin and α_1 -acid glycoprotein. The interaction between duloxetine and other highly protein bound drugs has not been fully evaluated. Plasma protein binding of duloxetine is not affected by renal or hepatic impairment.

Metabolism and Elimination — Biotransformation and disposition of duloxetine in humans have been determined following oral administration of ^{14}C -labeled duloxetine. Duloxetine comprises about 3% of the total radiolabeled material in the plasma, indicating that it undergoes extensive metabolism to numerous metabolites. The major biotransformation pathways for duloxetine involve oxidation of the naphthyl ring followed by conjugation and further oxidation. Both CYP1A2 and CYP2D6 catalyze the oxidation of the naphthyl ring *in vitro*. Metabolites found in plasma include 4-hydroxy duloxetine glucuronide and 5-hydroxy, 6-methoxy duloxetine sulfate. Many additional metabolites have been identified in urine, some representing only minor pathways of elimination. Only trace (<1% of the dose) amounts of unchanged duloxetine are present in the urine. Most (about 70%) of the duloxetine dose appears in the urine as metabolites of duloxetine; about 20% is excreted in the feces. Duloxetine undergoes extensive metabolism, but the major circulating metabolites have not been shown to contribute significantly to the pharmacologic activity of duloxetine.

13 NONCLINICAL TOXICOLOGY

13.1 Carcinogenesis, Mutagenesis, and Impairment of Fertility

Carcinogenesis — Duloxetine was administered in the diet to mice and rats for 2 years.

In female mice receiving duloxetine at 140 mg/kg/day (11 times the maximum recommended human dose [MRHD, 60 mg/day] and 6 times the human dose of 120 mg/day on a mg/m^2 basis), there was an increased incidence of hepatocellular adenomas and carcinomas. The no-effect dose was 50 mg/kg/day (4 times the MRHD and 2 times the human dose of 120 mg/day on a mg/m^2 basis). Tumor incidence was not increased in male mice receiving duloxetine at doses up to 100 mg/kg/day (8 times the MRHD and 4 times the human dose of 120 mg/day on a mg/m^2 basis).

In rats, dietary doses of duloxetine up to 27 mg/kg/day in females (4 times the MRHD and 2 times the human dose of 120 mg/day on a mg/m^2 basis) and up to 36 mg/kg/day in males (6 times the MRHD and 3 times the human dose of 120 mg/day on a mg/m^2 basis) did not increase the incidence of tumors.

Mutagenesis — Duloxetine was not mutagenic in the *in vitro* bacterial reverse mutation assay (Ames test) and was not clastogenic in an *in vivo* chromosomal aberration test in mouse bone marrow cells. Additionally, duloxetine was not genotoxic in an *in vitro* mammalian forward gene mutation assay in mouse lymphoma cells or in an *in vitro* unscheduled DNA synthesis (UDS) assay in primary rat hepatocytes, and did not induce sister chromatid exchange in Chinese hamster bone marrow *in vivo*.

Impairment of Fertility — Duloxetine administered orally to either male or female rats prior to and throughout mating at doses up to 45 mg/kg/day (7 times the maximum recommended human dose of 60 mg/day and 4 times the human dose of 120 mg/day on a mg/m^2 basis) did not alter mating or fertility.

14 CLINICAL STUDIES

14.1 Major Depressive Disorder

The efficacy of Cymbalta as a treatment for depression was established in 4 randomized, double-blind, placebo-controlled, fixed-dose studies in adult outpatients (18 to 83 years) meeting DSM-IV criteria for major depression. In 2 studies, patients were randomized to Cymbalta 60 mg once daily (N=123 and N=128, respectively) or placebo (N=122 and N=139, respectively) for 9 weeks; in the third study, patients were randomized to Cymbalta 20 or 40 mg twice daily (N=86 and N=91, respectively)

or placebo (N=89) for 8 weeks; in the fourth study, patients were randomized to Cymbalta 40 or 60 mg twice daily (N=95 and N=93, respectively) or placebo (N=93) for 8 weeks. There is no evidence that doses greater than 60 mg/day confer additional benefits.

In all 4 studies, Cymbalta demonstrated superiority over placebo as measured by improvement in the 17-item Hamilton Depression Rating Scale (HAMD-17) total score.

In all of these clinical studies, analyses of the relationship between treatment outcome and age, gender, and race did not suggest any differential responsiveness on the basis of these patient characteristics.

In another study, 533 patients meeting DSM-IV criteria for MDD received Cymbalta 60 mg once daily during an initial 12-week open-label treatment phase. Two hundred and seventy-eight patients who responded to open label treatment (defined as meeting the following criteria at weeks 10 and 12: a HAMD-17 total score ≤ 9 , Clinical Global Impressions of Severity (CGI-S) ≤ 2 , and not meeting the DSM-IV criteria for MDD) were randomly assigned to continuation of Cymbalta at the same dose (N=136) or to placebo (N=142) for 6 months. Patients on Cymbalta experienced a statistically significantly longer time to relapse of depression than did patients on placebo. Relapse was defined as an increase in the CGI-S score of ≥ 2 points compared with that obtained at week 12, as well as meeting the DSM-IV criteria for MDD at 2 consecutive visits at least 2 weeks apart, where the 2-week temporal criterion had to be satisfied at only the second visit. The effectiveness of Cymbalta in hospitalized patients with major depressive disorder has not been studied.

14.2 Generalized Anxiety Disorder

The efficacy of Cymbalta in the treatment of generalized anxiety disorder (GAD) was established in 1 fixed-dose randomized, double-blind, placebo-controlled trial and 2 flexible-dose randomized, double-blind, placebo-controlled trials in adult outpatients between 18 and 83 years of age meeting the DSM-IV criteria for GAD.

In 1 flexible-dose study and in the fixed-dose study, the starting dose was 60 mg once daily where down titration to 30 mg once daily was allowed for tolerability reasons before increasing it to 60 mg once daily. Fifteen percent of patients were down titrated. One flexible-dose study had a starting dose of 30 mg once daily for 1 week before increasing it to 60 mg once daily.

The 2 flexible-dose studies involved dose titration with Cymbalta doses ranging from 60 mg once daily to 120 mg once daily (N=168 and N=162) compared to placebo (N=159 and N=161) over a 10-week treatment period. The mean dose for completers at endpoint in the flexible-dose studies was 104.75 mg/day. The fixed-dose study evaluated Cymbalta doses of 60 mg once daily (N=168) and 120 mg once daily (N=170) compared to placebo (N=175) over a 9-week treatment period. While a 120 mg/day dose was shown to be effective, there is no evidence that doses greater than 60 mg/day confer additional benefit.

In all 3 studies, Cymbalta demonstrated superiority over placebo as measured by greater improvement in the Hamilton Anxiety Scale (HAM-A) total score and by the Sheehan Disability Scale (SDS) global functional impairment score. The SDS is a widely used and well-validated scale that measures the extent emotional symptoms disrupt patient functioning in 3 life domains: work/school, social life/leisure activities, and family life/home responsibilities.

Subgroup analyses did not indicate that there were any differences in treatment outcomes as a function of age or gender.

14.3 Diabetic Peripheral Neuropathic Pain

The efficacy of Cymbalta for the management of neuropathic pain associated with diabetic peripheral neuropathy was established in 2 randomized, 12-week, double-blind, placebo-controlled, fixed-dose studies in adult patients having diabetic peripheral neuropathic pain for at least 6 months. Study 1 and 2 enrolled a total of 791 patients of whom 592 (75%) completed the studies. Patients enrolled had Type I or II diabetes mellitus with a diagnosis of painful distal symmetrical sensorimotor polyneuropathy for at least 6 months. The patients had a baseline pain score of ≥ 4 on an 11-point scale ranging from 0 (no pain) to 10 (worst possible pain). Patients were permitted up to 4 g of acetaminophen per day as needed for pain, in addition to Cymbalta. Patients recorded their pain daily in a diary.

Both studies compared Cymbalta 60 mg once daily or 60 mg twice daily with placebo. Study 1 additionally compared Cymbalta 20 mg with placebo. A total of 457 patients (342 Cymbalta, 115 placebo) were enrolled in Study 1 and a total of 334 patients (226 Cymbalta, 108 placebo) were enrolled in Study 2. Treatment with Cymbalta 60 mg one or two times a day statistically significantly improved the endpoint mean pain scores from baseline and increased the proportion of patients with at least a 50% reduction in

pain score from baseline. For various degrees of improvement in pain from baseline to study endpoint, Figures 1 and 2 show the fraction of patients achieving that degree of improvement. The figures are cumulative, so that patients whose change from baseline is, for example, 50%, are also included at every level of improvement below 50%. Patients who did not complete the study were assigned 0% improvement. Some patients experienced a decrease in pain as early as Week 1, which persisted throughout the study.

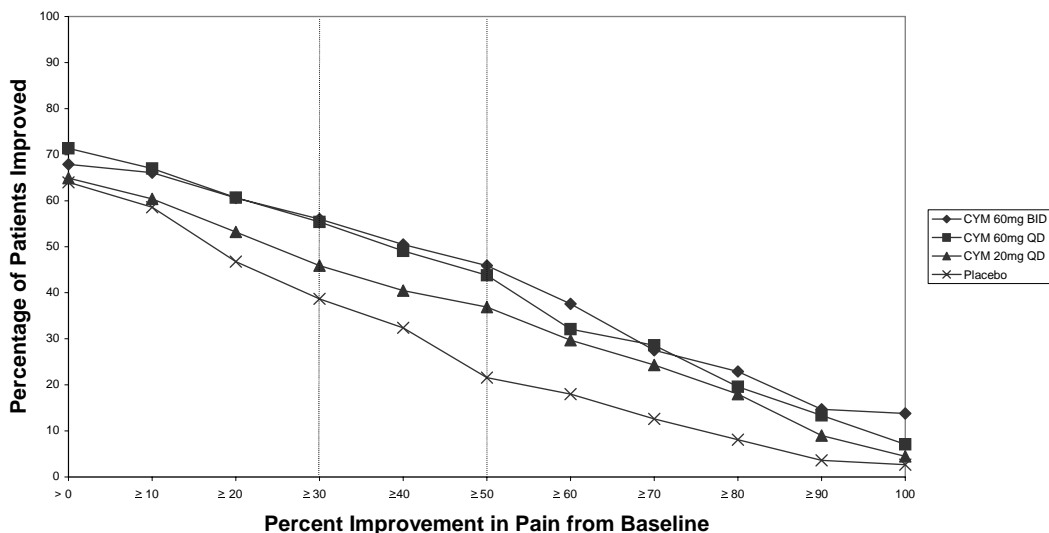
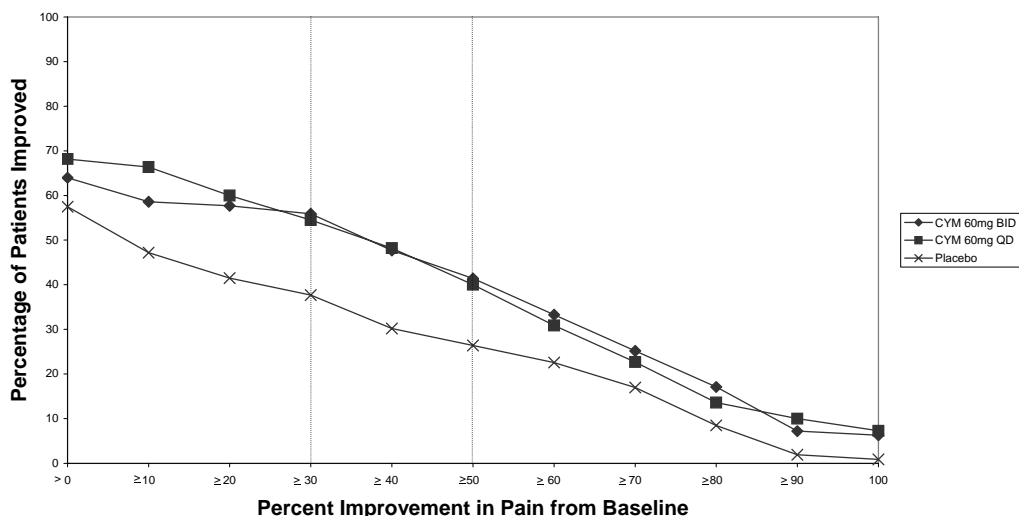


Figure 1: Percentage of Patients Achieving Various Levels of Pain Relief as Measured by 24-Hour Average Pain Severity - Study 1

Figure 2: Percentage of Patients Achieving Various Levels of Pain Relief



as Measured by 24-Hour Average Pain Severity - Study 2

14.4 Fibromyalgia

The efficacy of Cymbalta for the management of fibromyalgia was established in two randomized, double-blind, placebo-controlled, fixed-dose studies in adult patients meeting the American College of Rheumatology criteria for fibromyalgia (a history of widespread pain for 3 months, and pain present at 11 or more of the 18 specific tender point sites). Study 1 was three months in duration and enrolled female patients only. Study 2 was six months in duration and enrolled male and female patients. Approximately

25% of participants had a comorbid diagnosis of major depressive disorder (MDD). Study 1 and 2 enrolled a total of 874 patients of whom 541 (62%) completed the studies. The patients had a baseline pain score of 6.5 on an 11-point scale ranging from 0 (no pain) to 10 (worst possible pain).

Both studies compared Cymbalta 60 mg once daily or 120 mg daily (given in divided doses in Study 1 and as a single daily dose in Study 2) with placebo. Study 2 additionally compared Cymbalta 20 mg with placebo during the initial three months of a six-month study. A total of 354 patients (234 Cymbalta, 120 placebo) were enrolled in Study 1 and a total of 520 patients (376 Cymbalta, 144 placebo) were enrolled in Study 2 (5% male, 95% female). Treatment with Cymbalta 60 mg or 120 mg daily statistically significantly improved the endpoint mean pain scores from baseline and increase the proportion of patients with at least a 50% reduction in pain score from baseline. Pain reduction was observed in patients both with and without comorbid MDD. However, the degree of pain reduction may be greater in patients with comorbid MDD. For various degrees of improvement in pain from baseline to study endpoint, Figures 3 and 4 show the fraction of patients achieving that degree of improvement. The figures are cumulative so that patients whose change from baseline is, for example, 50%, are also included at every level of improvement below 50%. Patients who did not complete the study were assigned 0% improvement. Some patients experienced a decrease in pain as early as Week 1, which persisted throughout the study. Improvement was also demonstrated on measures of function (Fibromyalgia Impact Questionnaires) and patient global impression of change (PGI). Neither study demonstrated a benefit of 120 mg compared to 60 mg, and a higher dose was associated with more adverse reactions and premature discontinuations of treatment.

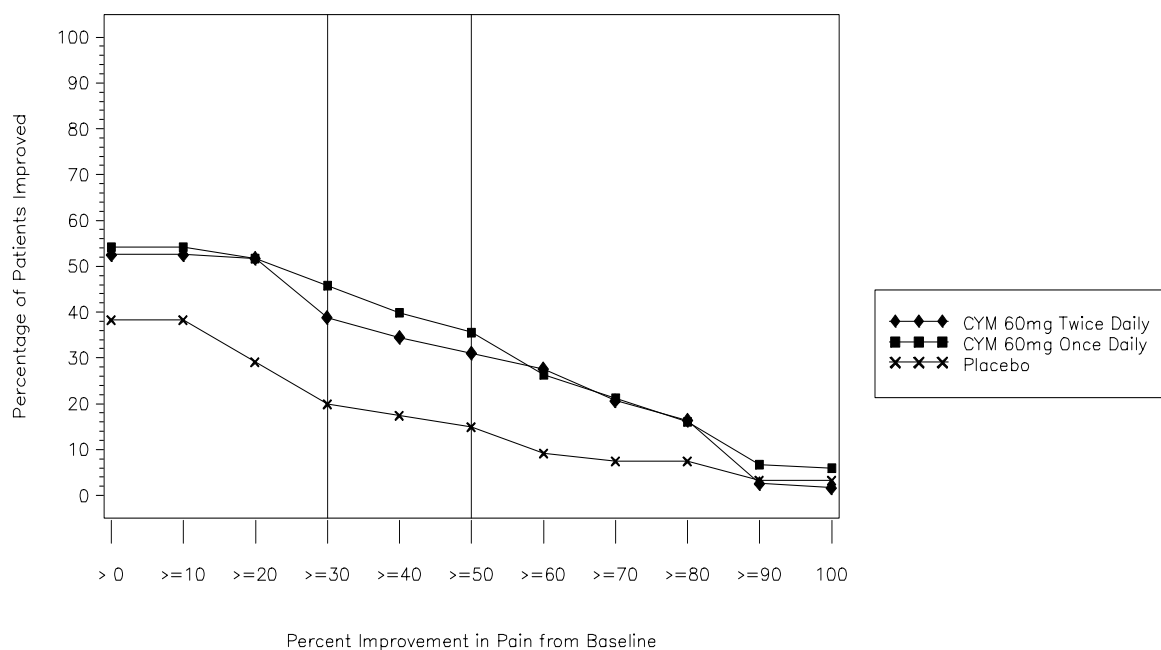


Figure 3: Percentage of Patients Achieving Various Levels of Pain Relief as Measured by 24-Hour Average Pain Severity - Study 1

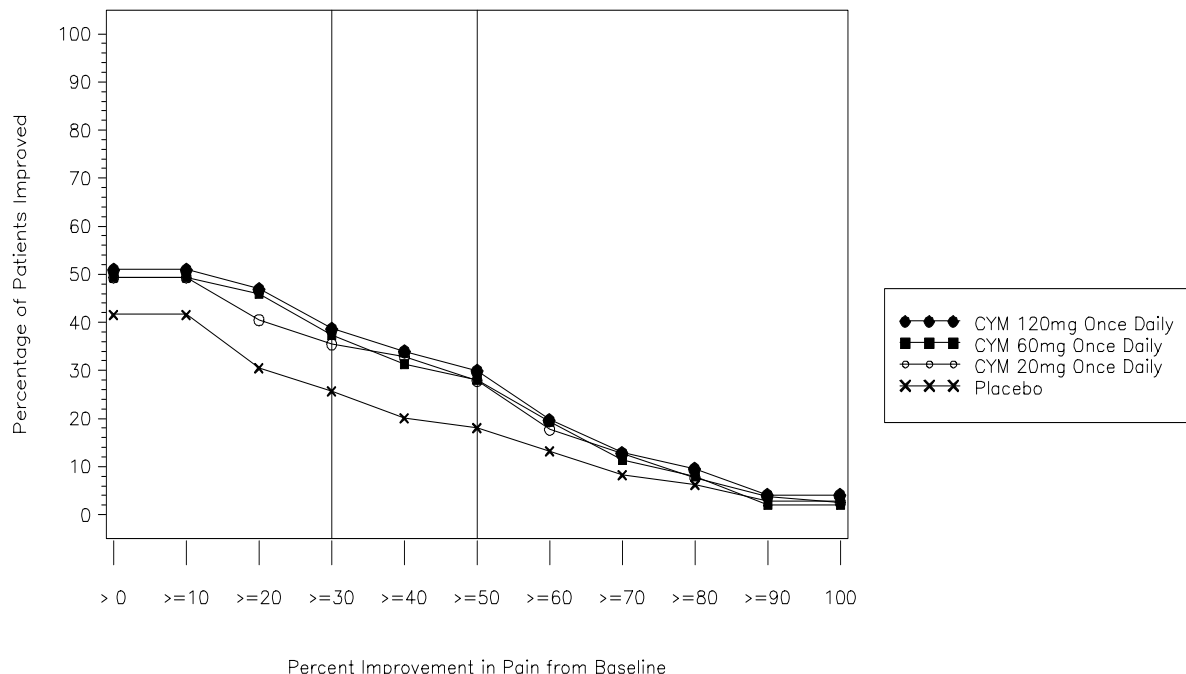


Figure 4: Percentage of Patients Achieving Various Levels of Pain Relief as Measured by 24-Hour Average Pain Severity - Study 2

Additionally, the benefit of up-titration in non-responders to Cymbalta at 60 mg/day was evaluated in an separate study. Patients were initially treated with Cymbalta 60 mg once daily for eight weeks in open-label fashion. Subsequently, completers of this phase were randomized to double-blind treatment with Cymbalta at either 60 mg once daily or 120 mg once daily. Those patients who were considered non-responders, where response was defined as at least a 30% reduction in pain score from baseline at the end of the 8 week treatment, were no more likely to meet response criteria at the end of 60 weeks of treatment if blindly titrated to Cymbalta 120 mg as compared to those who were blindly continued on Cymbalta 60 mg.

16 HOW SUPPLIED/STORAGE AND HANDLING

16.1 How Supplied

Cymbalta is available as delayed release capsules in the following strengths, colors, imprints, and presentations:

Features	Strengths		
	20 mg*	30 mg*	60 mg*
Body color	Opaque green	Opaque white	Opaque green
Cap color	Opaque green	Opaque blue	Opaque blue
Cap imprint	Lilly 3235	Lilly 3240	Lilly 3237
Body imprint	20mg	30mg	60mg
Capsule number	PU3235	PU3240	PU3237
Presentations and NDC Codes			
Bottles of 30	NA	0002-3240-30	0002-3237-30
Bottles of 60	0002-3235-60	NA	NA
Bottles of 90	NA	0002-3240-90	0002-3237-90
Bottles of 1000	NA	0002-3240-04	0002-3237-04
Blisters ID†100	NA	0002-3240-33	0002-3237-33
Blister card of 30	NA	NA	0002-3237-34

* equivalent to duloxetine base

† Identi-Dose® (unit dose medication, Lilly)

16.2 Storage

Store at 25°C (77°F); excursions permitted to 15-30°C (59-86°F) [*see* USP Controlled Room Temperature].

17 PATIENT COUNSELING INFORMATION

See FDA-approved Medication Guide

17.1 Information on Medication Guide

Prescribers or other health professionals should inform patients, their families, and their caregivers about the benefits and risks associated with treatment with Cymbalta and should counsel them in its appropriate use. A patient Medication Guide About Using Antidepressants in Children and Teenagers is available for Cymbalta. The prescriber or health professional should instruct patients, their families, and their caregivers to read the Medication Guide and should assist them in understanding its contents. Patients should be given the opportunity to discuss the contents of the Medication Guide and to obtain answers to any questions they may have. The complete text of the Medication Guide is reprinted at the end of this document.

Patients should be advised of the following issues and asked to alert their prescriber if these occur while taking Cymbalta.

17.2 Clinical Worsening and Suicide Risk

Patients, their families, and their caregivers should be encouraged to be alert to the emergence of anxiety, agitation, panic attacks, insomnia, irritability, hostility, aggressiveness, impulsivity, akathisia (psychomotor restlessness), hypomania, mania, other unusual changes in behavior, worsening of depression, and suicidal ideation, especially early during antidepressant treatment and when the dose is adjusted up or down. Families and caregivers of patients should be advised to observe for the emergence of such symptoms on a day-to-day basis, since changes may be abrupt. Such symptoms should be reported to the patient's prescriber or health professional, especially if they are severe, abrupt in onset, or were not part of the patient's presenting symptoms. Symptoms such as these may be associated with an increased risk for suicidal thinking and behavior and indicate a need for very close monitoring and possibly changes in the medication [*see Boxed Warning, and Warnings and Precautions (5.1)*].

17.3 Medication Administration

Cymbalta should be swallowed whole and should not be chewed or crushed, nor should the capsule be opened and its contents be sprinkled on food or mixed with liquids. All of these might affect the enteric coating.

17.4 Continuing the Therapy Prescribed

While patients may notice improvement with Cymbalta therapy in 1 to 4 weeks, they should be advised to continue therapy as directed.

17.5 Abnormal Bleeding

Patients should be cautioned about the concomitant use of duloxetine and NSAIDs, aspirin, warfarin, or other drugs that affect coagulation since combined use of psychotropic drugs that interfere with serotonin reuptake and these agents has been associated with an increased risk of bleeding [*see Warnings and Precautions (5.5)*].

17.6 Concomitant Medications

Patients should be advised to inform their physicians if they are taking, or plan to take, any prescription or over-the-counter medications, since there is a potential for interactions [*see Dosage and Administration (2.5), Contraindications (4.1), Warnings and Precautions (5.4 and 5.10), and Drug Interactions (7)*].

17.7 Serotonin Syndrome

Patients should be cautioned about the risk of serotonin syndrome with the concomitant use of Cymbalta and triptans, tramadol or other serotonergic agents [*see Warnings and Precautions (5.4) and Drug Interactions (7.14)*].

17.8 Pregnancy and Breast Feeding

Patients should be advised to notify their physician if they

- become pregnant during therapy
- intend to become pregnant during therapy
- are breast feeding [*see Dosage and Administration (2.3) and Use in Specific Populations (8.1, 8.2, and 8.3)*].

17.9 Alcohol

Although Cymbalta does not increase the impairment of mental and motor skills caused by alcohol, use of Cymbalta concomitantly with heavy alcohol intake may be associated with severe liver injury. For this reason, Cymbalta should ordinarily not be prescribed for patients with substantial alcohol use [*see Warnings and Precautions (5.2) and Drug Interactions (7.16)*].

17.10 Orthostatic Hypotension and Syncope

Patients should be advised of the risk of orthostatic hypotension and syncope, especially during the period of initial use and subsequent dose escalation, and in association with the use of concomitant drugs that might potentiate the orthostatic effect of duloxetine [*see Warnings and Precautions (5.3)*].

17.11 Interference with Psychomotor Performance

Any psychoactive drug may impair judgment, thinking, or motor skills. Although in controlled studies Cymbalta has not been shown to impair psychomotor performance, cognitive function, or memory, it may be associated with sedation and dizziness. Therefore, patients should be cautioned about operating hazardous machinery including automobiles, until they are reasonably certain that Cymbalta therapy does not affect their ability to engage in such activities.

Literature revised: mmddyyyy

Eli Lilly and Company
Indianapolis, IN 46285, USA
Copyright © 2004, 2008, Eli Lilly and Company. All rights reserved.

Medication Guide

Antidepressant Medicines, Depression and other Serious Mental Illnesses, and Suicidal Thoughts or Actions

Read the Medication Guide that comes with your or your family member's antidepressant medicine. This Medication Guide is only about the risk of suicidal thoughts and actions with antidepressant medicines. **Talk to your, or your family member's, healthcare provider about:**

- all risks and benefits of treatment with antidepressant medicines
- all treatment choices for depression or other serious mental illness

What is the most important information I should know about antidepressant medicines, depression and other serious mental illnesses, and suicidal thoughts or actions?

- 1. Antidepressant medicines may increase suicidal thoughts or actions in some children, teenagers, and young adults within the first few months of treatment.**
- 2. Depression and other serious mental illnesses are the most important causes of suicidal thoughts and actions. Some people may have a particularly high risk of having suicidal thoughts or actions.** These include people who have (or have a family history of) bipolar illness (also called manic-depressive illness) or suicidal thoughts or actions.
- 3. How can I watch for and try to prevent suicidal thoughts and actions in myself or a family member?**
 - Pay close attention to any changes, especially sudden changes, in mood, behaviors, thoughts, or feelings. This is very important when an antidepressant medicine is started or when the dose is changed.
 - Call the healthcare provider right away to report new or sudden changes in mood, behavior, thoughts, or feelings.
 - Keep all follow-up visits with the healthcare provider as scheduled. Call the healthcare provider between visits as needed, especially if you have concerns about symptoms.

Call a healthcare provider right away if you or your family member has any of the following symptoms, especially if they are new, worse, or worry you:

- thoughts about suicide or dying
- attempts to commit suicide
- new or worse depression
- new or worse anxiety
- feeling very agitated or restless
- panic attacks

- trouble sleeping (insomnia)
- new or worse irritability
- acting aggressive, being angry, or violent
- acting on dangerous impulses
- an extreme increase in activity and talking (mania)
- other unusual changes in behavior or mood

What else do I need to know about antidepressant medicines?

- **Never stop an antidepressant medicine without first talking to a healthcare provider.** Stopping an antidepressant medicine suddenly can cause other symptoms.
- **Antidepressants are medicines used to treat depression and other illnesses.** It is important to discuss all the risks of treating depression and also the risks of not treating it. Patients and their families or other caregivers should discuss all treatment choices with the healthcare provider, not just the use of antidepressants.
- **Antidepressant medicines have other side effects.** Talk to the healthcare provider about the side effects of the medicine prescribed for you or your family member.
- **Antidepressant medicines can interact with other medicines.** Know all of the medicines that you or your family member takes. Keep a list of all medicines to show the healthcare provider. Do not start new medicines without first checking with your healthcare provider.
- **Not all antidepressant medicines prescribed for children are FDA approved for use in children.** Talk to your child's healthcare provider for more information.

This Medication Guide has been approved by the US Food and Drug Administration for all antidepressants.

Patient Information revised June 21, 2007

PV 5083 AMP